

# 25th Annual Excellence in Construction Awards

Top Construction Teams  
Exemplary Safety Programs  
Champions of Diversity







# National Excellence in Construction Awards

PANEL OF JUDGES / 3

## **PAGE 4**

### Eagle Winners

SPECIALTY CONTRACTOR CATEGORIES / 4

COMMUNITY/PUBLIC SERVICE / 4

ELECTRICAL / 4

EXTERIORS / 6

INTERIORS / 6

MECHANICAL / 7

OTHER SPECIALTY CONSTRUCTION / 8

SITEWORK/LANDSCAPE/HARDSCAPE / 9

GENERAL CONTRACTOR/CONSTRUCTION MANAGEMENT CATEGORIES / 9

COMMERCIAL / 9

COMMUNITY/PUBLIC SERVICE / 11

FEDERAL GOVERNMENT/MILITARY / 11

HEALTH CARE / 12

HISTORICAL RESTORATION/RENOVATION / 13

INDUSTRIAL / 13

INFRASTRUCTURE: HEAVY / 14

INSTITUTIONAL / 15

MEGA-PROJECTS / 16

OTHER CONSTRUCTION / 17

PRE-ENGINEERED BUILDING / 17

PUBLIC WORKS/ENVIRONMENTAL / 18

RENOVATION / 18

RESIDENTIAL / 19

## **PAGE 20**

### Pyramid Winners

SPECIALTY CONTRACTOR CATEGORIES / 20

GENERAL CONTRACTOR/CONSTRUCTION MANAGEMENT CATEGORIES / 22

# National Safety Excellence Awards

PANEL OF JUDGES / 25

## **PAGE 26**

### Pinnacle Winners

HEAVY AND CIVIL ENGINEERING CONTRACTOR / 26

SPECIALTY CONTRACTOR / 26

## **PAGE 26**

### Excellence Winners

GENERAL CONTRACTOR / 26

HEAVY AND CIVIL ENGINEERING CONTRACTOR / 26

SPECIALTY CONTRACTOR / 26

## **PAGE 27**

### Merit Winners

GENERAL CONTRACTOR / 27

HEAVY AND CIVIL ENGINEERING CONTRACTOR / 27

SPECIALTY CONTRACTOR / 27

# National Diversity Excellence Awards

PANEL OF JUDGES / 29

## **PAGE 29**

### Winners

ASSOCIATE / 29

SUPPLIER / 29

SUBCONTRACTOR / 29

EMERGING SUBCONTRACTOR / 29

GENERAL CONTRACTOR / 29

# Contractor of the Year Award

PAGE 30

## **PAGE 31**

### 2014 STEP Diamond Recipients

## **PAGE 32**

### Index Of All Winners

# Built on Excellence

## **2014 EXCELLENCE IN CONSTRUCTION AWARD RECIPIENTS**

The Excellence in Construction Awards  
honor the skill and creativity of the  
entire team—contractor, owner, architect  
and engineer—responsible for an outstanding  
merit shop construction project. The 2014  
award recipients exceeded expectations  
in innovation and quality.



## Panel of Judges

**RICHARD A. BELLE, IOM, CAE**

*President*

Belle Communications, LLC  
Bethesda, Md.

**SAM CARRADINE**

*Development & Diversity Consultant*

The Surety & Fidelity Association of America  
Washington, D.C.

**PATRICK L. GLON**

*Retired, Professor Emeritus*

Purdue University, West Lafayette, Ind.  
Now residing in Sturgis, Mich.

**DANIEL GROVES**

*Director of Operations*

Construction Users Roundtable  
Cincinnati, Ohio

**DEDE HUGHES, IOM**

*Executive Vice President*

National Association of Women in Construction  
Fort Worth, Texas

**JJ MCCARTHY, LEED AP**

*Director of Preconstruction Services*

KBR Building Group  
Vienna, Va.

**DAVE MIELKE**

*President*

M.W. Mielke, Inc.  
Tampa, Fla.

**CHANDRA STROOPE**

*Haley-Greer, Inc.*

Dallas, Texas

**RICHARD THOMAS**

*Director of State & Local Legislative Affairs*

Design-Build Institute of America  
Washington, D.C.

**ANDREW WRIGHT**

*News Director*

Engineering News-Record  
New York, N.Y.

# Eagle Winners

Specialty Contractor  
Categories

COMMUNITY/PUBLIC SERVICE

**EARLY SERVICES, INC.** **C**  
The HEALS Clinic **N**  
Toney, Ala. **L**  
Early Services, Inc. on Behalf of Early Services, Inc. **CO**  
and Member Companies at Large **A**  
Fuqua & Partners Architects **E**  
Engineered Solutions, Inc.



Early Services joined 29 members of the ABC North Alabama Chapter in donating time, materials and equipment for the construction of a new school-based medical and dental clinic for underprivileged children and their siblings.

ELECTRICAL

**EXCEL CONTRACTORS, INC.** **C**  
Dow-Mitsui Chlorine #7 Project Falcon B-800 **N**  
Freeport, Texas **L**  
Dow-Mitsui Chlor-Alkali, LLC **CO**  
Samsung Engineering America, Inc. **E**



EXCEL logged 1.2 million safe manhours over two years while performing \$79 million of electrical and instrumentation work at this chlorine and caustic soda facility—often going above and beyond to ensure quality control and manage fluctuating manpower requirements.

ELECTRICAL: COMMERCIAL  
\$2-10 MILLION

**HELIX ELECTRIC** **C**  
La Jolla Commons Phase II **N**  
San Diego, Calif. **L**  
HSPF La Jolla Commons II Investors LLC **CO**  
Aecom Technical Services **A**  
WSP **E**  
Whiting-Turner **GC**



Helix relied on 3-D BIM coordination to design and install electrical, fire, security and traffic control systems for the nation's largest carbon neutral office building—a 13-story tower featuring 6,000 LEDs that was completed on time and within budget.



# Eagle Winners

Specialty Contractor  
Categories



Bergstrom crews had to overcome a six-month winter weather delay in order to complete the electrical work—as well as an integrated, network-based classroom call system—for a new 85,000-square-foot K-12 school in rural North Dakota.

**ELECTRICAL: COMMERCIAL  
LESS THAN \$2 MILLION**

- C** **BERGSTROM ELECTRIC, INC.**
- N** Barnes County North School
- L** Leal, N.D.
- CO** Barnes County North School District No. 7
- A** JLG Architects
- E** MBN Engineering, Inc.



The world's third largest oil refinery increased its capacity by approximately 22 percent after ISC safely performed a nine-month turnaround requiring the installation of 30 miles of new power and control cables amid congested work areas and weather delays.

**ELECTRICAL: INDUSTRIAL  
\$2-10 MILLION**

- C** **ISC CONSTRUCTORS, L.L.C.**
- N** Marathon October 2013 Major Crude and Platformer Turnaround
- L** Garyville, La.
- CO** Marathon Petroleum Corporation
- E** Jacobs



ISC expended 9,900 injury-free manhours over nine months turning an initial hand-sketched design into a nearly 4 megawatt system that powers temporary offices and facilities supporting the construction of a new \$850 million ammonia plant.

**ELECTRICAL: INDUSTRIAL  
LESS THAN \$2 MILLION**

- C** **ISC CONSTRUCTORS, L.L.C.**
- N** Dyno Nobel Ammonia Project - Site Temporary Power
- L** Waggaman, La.
- CO** Dyno Nobel Louisiana Ammonia, L.L.C. (DNLA)
- E** KBR
- GC** KBR

# Eagle Winners

Specialty Contractor  
Categories

**EXTERIORS: ALL EXTERIORS**

- KENPAT USA, LLC**

C
- Port Canaveral Exploration Tower

N
- Port Canaveral, Fla.

L
- Canaveral Port Authority

CO
- GWWO, Inc/ Architects

A
- Skanska USA Building, Inc

GC



Safety, creativity and attention to detail were top priorities as Kenpat took on the five-month design, prefabrication and installation of 42 concave, tapering structural panelized units and 245 aluminum composite panels for the Port Canaveral welcome center.

**INTERIORS: ACOUSTICAL, DRYWALL,  
MILLWORK OR PLASTER**

- WARFEL CONSTRUCTION COMPANY**

C
- Georgelis Law Firm, P.C. Woodwork

N
- Lancaster, Pa.

L
- Anthony M. Georgelis

CO
- Bernardon Haber Holloway Architects

A
- David Miller Associates, Inc.

E



Warfel provided complete project oversight on this 11,000-square-foot building, working closely with the primary tenant to deliver a sophisticated law office showcasing locally fabricated cherry millwork in just nine months.

**INTERIORS:  
ALL OTHER INTERIOR FINISHES**

- CAMARATA MASONRY SYSTEMS, LTD.**

C
- 3009 Post Oak

N
- Houston, Texas

L
- Skanska USA Commercial Development

CO
- Kirskey Architecture

A
- Skanska USA Building, Inc.

GC



Camarata's craftsmanship can be seen in the clean lines of this office building's granite and marble surfaces, including the stone and tile laid in a running bond pattern and the perfectly aligned interior lobby and exterior plaza paving joints.



# Eagle Winners

Specialty Contractor  
Categories



After being awarded this pharmaceutical manufacturing project at the 65 percent design stage, 3-D BIM coordination allowed Century to successfully install FDA-approved mechanical, high purity and plumbing systems while processing 68 change orders for scope additions.

## MECHANICAL

- C CENTURY CONTRACTORS, INC.**  
**N** Nephron Pharmaceuticals  
**L** West Columbia, S.C.  
**CO** Nephron Pharmaceuticals Corporation  
**A** Associated Consulting International, ACI, Inc.  
**E** Affiliated Engineers, Inc.  
**GC** Jack Jennings & Sons, Inc./J. Raymond Construction



In addition to helping deliver the nation's first university alumni center to achieve LEED Platinum certification, Custom Aire substantially reduced the mechanical contracting portion of the budget and donated \$50,000 toward this 39,600-square-foot project.

## MECHANICAL: COMMERCIAL \$2-10 MILLION

- C CUSTOM AIRE, INC.**  
**N** University of North Dakota Gorecki Alumni Center  
**L** Grand Forks, N.D.  
**CO** University of North Dakota Alumni Association and Foundation  
**A** JLG Architects  
**E** Obermiller Nelson Engineering Inc.  
**GC** Community Contractors

## GREENER TOMORROW AWARD WINNER



Relying on field inspections and its design-build expertise, Waldrop installed efficient mechanical, plumbing, fire protection and electrical systems in the kitchen area of a university dining hall—achieving substantial completion in just 82 days.

## MECHANICAL: COMMERCIAL LESS THAN \$2 MILLION

- C WALDROP MECHANICAL SERVICES**  
**N** Bob Jones University  
Dining Common Kitchen Renovation  
**L** Greenville, S.C.  
**CO** Bob Jones University  
**A** Craig Gaulden Davis  
**E** Peritus Engineers

## PRODUCTIVITY AWARD WINNER

## DESIGN-BUILD INSTITUTE OF AMERICA AWARD WINNER

# Eagle Winners

Specialty Contractor  
Categories

**OTHER SPECIALTY CONSTRUCTION:  
COMMERCIAL - LESS THAN \$10 MILLION**

**AGGREGATE TECHNOLOGIES, INC.** **C**

G.T. "Mickey" Leland Federal Building Renovation **N**  
Houston, Texas **L**  
General Services Administration **CO**  
Gensler **A**  
Gilbane Building Company **GC**



Aggregate Technologies safely removed 340 precast panels weighing more than 2,000 pounds each from a fully operational federal office located on a busy city block by working at night and using two specially designed cranes mounted atop the 22-story building.

**OTHER SPECIALTY CONSTRUCTION:  
COMMERCIAL - MORE THAN \$10 MILLION**

**WAYNE BROTHERS, INC.** **C**

BB&T Ballpark **N**  
Charlotte, N.C. **L**  
Mecklenburg County **CO**  
Odell, Inc. **A**  
Kimley-Horn and Associates, Inc. **E**  
Rodgers Builders/Barton Malow JV **GC**



Wayne Brothers completed the turnkey sitework and concrete packages for a LEED-certified minor league ballpark located in the heart of Charlotte—relying on BIM to resolve issues offsite, coordinate rebar detailing and build custom formwork for the bleachers.

**OTHER SPECIALTY CONSTRUCTION:  
INDUSTRIAL - LESS THAN \$10 MILLION**

**ISC CONSTRUCTORS, L.L.C.** **C**

Air Products **N**  
GE Healthcare Helium Liquefaction Facility **L**  
Florence, S.C. **CO**  
GE Healthcare



ISC's 20-person team logged more than 8,000 incident-free manhours in just nine weeks while performing electrical and instrumentation work on a helium liquefaction facility, coming in 15 percent under budget and with no interruption to operations.





Wondra removed drainage infrastructure, filled seven ditches and installed four spillways—as well as deployed GPS machine control equipment to move more than 24,000 cubic yards of dirt—during the four-month restoration of a 1,600-acre farm.

# Eagle Winners

Specialty Contractor  
Categories

**SITework/LANDSCAPE/HARDSCAPE**

- C** **WONDRA CONSTRUCTION INC.**
- N** Bark River WRP Wetland Restoration Project
- L** Dousman, Wis.
- CO** United States Department of Agriculture Natural Resources Conservation Service (NRCS)



# Eagle Winners

General Contractor/  
Construction  
Management  
Categories



Despite nearly a month of weather delays, Brasfield & Gorrie completed a \$20.3 million, state-of-the-art Tier IV/III data center—one of only 52 worldwide—five weeks early with the help of a stage-and-gate project delivery framework.

**COMMERCIAL - \$10-25 MILLION**

- C** **BRASFIELD & GORRIE, LLC**
- N** C Spire Systems Operations Center
- L** Starkville, Miss.
- CO** C Spire Wireless
- A** Pieper O'Brien Herr/Dale Partners
- E** Syska Hennessy Group

**PRODUCTIVITY  
AWARD WINNER**



# Eagle Winners

General Contractor/  
Construction  
Management  
Categories

COMMERCIAL - \$25-100 MILLION

E.E. REED CONSTRUCTION, L.P. **C**  
Texas Instruments **N**  
Sugar Land, Texas **L**  
Texas Instruments Inc. **CO**  
Powers Brown Architecture **A**  
Cardno Haynes Whaley **E**



E.E. Reed overcame a constantly changing scope of work to meet the hard deadline for this 165,000-square-foot build-to-suit office and lab facility, which features customized industrial MEP equipment, sustainable building systems and an adjacent three-story precast garage.

COMMERCIAL - \$5-10 MILLION

WARFEL CONSTRUCTION COMPANY **C**  
Eurofins Lancaster Laboratories Building D Expansion **N**  
Lancaster, Pa. **L**  
Eurofins Lancaster Laboratories, Inc. **CO**  
Hammel Associates Architects, LLC **A**  
Moore Engineering Company **E**



This year-long, 80,000-square-foot laboratory addition required Warfel and its subcontractors to do extensive preconstruction planning, tie into an existing building on three different floors, re-route MEP systems, adhere to strict safety policies and coordinate just-in-time deliveries.

COMMERCIAL - LESS THAN \$5 MILLION

TURNER CONSTRUCTION COMPANY **C**  
Davidson Properties Phase II Expansion **N**  
Huntsville, Ala. **L**  
Davidson Properties LLC **CO**  
Fuqua & Partners Architects **A**



With shared values of teamwork and integrity, Turner delivered to the owner a 23,000-square-foot office and data center connected to an existing and occupied complex, using push/pull planning to stay on the eight-month schedule despite unexpected icy weather.

# Eagle Winners

General Contractor/  
Construction  
Management  
Categories

## COMMUNITY/PUBLIC SERVICE

- C

**E.E. REED CONSTRUCTION, L.P.**
- N

Sugar Land Veterans Memorial
- L

Sugar Land, Texas
- CO

City of Sugar Land
- A

Powers Brown Architecture
- E

Pinnacle Structural Engineers



E.E. Reed led a team of 35 companies that demonstrated the capabilities of tilt-wall construction by building a monument honoring veterans in just 42 days, with the pentagon shape and 50-foot-tall panels symbolizing all five military branches.



Despite 10 feet of rain and extensive demolition and utility installation delays, Brasfield & Gorrie kept this \$33 million LEED Silver elementary school on schedule by re-sequencing work, engaging key subcontractors and logging overtime without recording any lost-time injuries.

## FEDERAL GOVERNMENT/MILITARY \$10-100 MILLION

- C

**BRASFIELD & GORRIE, LLC**
- N

Kimberly Hampton Primary School at Fort Bragg
- L

Fort Bragg, N.C.
- CO

U.S. Army Corps of Engineers, Savannah District
- A

SchenkelShultz Architecture
- E

TLC Engineering

DESIGN-BUILD INSTITUTE  
OF AMERICA AWARD WINNER

GREENER TOMORROW  
AWARD WINNER



Despite record-low temperatures, unmarked utilities, inaccurate as-builts and water infiltration, Kwest Group safely dewatered and repaired a sanitary sewage lagoon system serving more than 5,000 active military members and civilians.

## FEDERAL GOVERNMENT/MILITARY LESS THAN \$10 MILLION

- C

**KWEST GROUP, LLC**
- N

Repair Sanitary Sewage Lagoons
- L

Grand Forks Air Force Base, N.D.
- CO

Grand Forks Air Force Base
- A

Kenneth Hahn Architects
- E

Advanced Engineering and Environmental Services, Inc. (AE2S)



# Eagle Winners

General Contractor/  
Construction  
Management  
Categories

## HEALTH CARE - \$10-25 MILLION

<b>BRASFIELD &amp; GORRIE, LLC</b>	<b>C</b>
Carolinas HealthCare System	<b>N</b>
SouthPark Emergency Department	<b>L</b>
Charlotte, N.C.	<b>CO</b>
Carolinas HealthCare System	<b>A</b>
BBH Design	<b>E</b>
Mulkey Engineers & Consultants	

PRODUCTIVITY  
AWARD WINNER



Under a hybrid, BIM-intensive "collaborate-bid-build" delivery method, Brasfield & Gorrie overcame 88 inches of rain and site constraints on an active health care campus to complete a one-story emergency department and three-level parking deck in 17 months.

## HEALTH CARE - \$25-100 MILLION

<b>BRASFIELD &amp; GORRIE, LLC</b>	<b>C</b>
St. Vincent Medical Center	<b>N</b>
Northeast Inpatient Expansion	<b>L</b>
Fishers, Ind.	<b>CO</b>
Ascension Health/St. Vincent Health	<b>A</b>
Gallagher & Associates	<b>E</b>
TRC Worldwide Engineering	



Following a lean, electronic-based approach to construction management, Brasfield & Gorrie and its 37 subcontractors delivered this LEED-designed medical center addition and renovation in just 15 months and with a 1.5 percent reduction in the project budget.

## HEALTH CARE - LESS THAN \$10 MILLION

<b>SPAWGLASS</b>	<b>C</b>
Tropical Texas Behavioral Health Harlingen Facility	<b>N</b>
Harlingen, Texas	<b>L</b>
Tropical Texas Behavioral Health	<b>CO</b>
Rike-Odgen-Figueroa-Allex Architects	<b>A</b>



Aided by open communication and project management technology, SpawGlass helped consolidate mental health services previously spread out among several facilities into a new \$6 million, 32,000-square-foot outpatient clinic featuring curved walls and five courtyards.



# Eagle Winners

General Contractor/  
Construction  
Management  
Categories



Milender White led the 19-month transformation of a 133-year-old train depot into a hotel—with retail and restaurants on the ground floor—while coordinating with multiple stakeholders and adjacent construction operations at the multimodal transit center.

**HISTORICAL RESTORATION/RENOVATION  
\$25-100 MILLION**

- C** **MILENDER WHITE CONSTRUCTION CO.**  
**N** Denver Union Station Redevelopment  
**L** Denver, Colo.  
**CO** Regional Transportation District (RTD)/  
Union Station Alliance (USA)  
**A** Tryba Architects/JG Johnson Architects  
**E** Monroe and Newell Engineers, Inc.

**DESIGN-BUILD INSTITUTE  
OF AMERICA AWARD WINNER**



Brindley worked in tight confines to bring the 19th century wood-framed Jack Daniel Distillery museum back to its original elevation; plus, it reduced the owner's original lump sum estimate by 48 percent and finished the job in 35 days.

**HISTORICAL RESTORATION/RENOVATION  
LESS THAN \$25 MILLION**

- C** **BRINDLEY CONSTRUCTION, LLC**  
**N** Restoration of Jack's Old Office  
**L** Lynchburg, Tenn.  
**CO** Jack Daniel Distillery  
**E** Oliver Little Gipson Engineering, Inc.



Turner Industries Group minimized manpower overload on this 52-day process unit turnaround by completing a large percentage of work in a nine-month pre-construction phase while the plant remained operational, resulting in zero recordable incidents and a leak-free startup.

**INDUSTRIAL - \$15-25 MILLION**

- C** **TURNER INDUSTRIES GROUP, L.L.C.**  
**N** Marathon Petroleum HCU Revamp/Turnaround  
**L** Garyville, La.  
**CO** Marathon Petroleum  
**E** Jacobs Engineering

# Eagle Winners

General Contractor/  
Construction  
Management  
Categories

## INDUSTRIAL - \$25-100 MILLION

### AMEC FOSTER WHEELER C

RTI International TECO Polk Station N  
Warm Syngas Clean-up Demonstration Plant L  
Mulberry, Fla. L  
RTI International CO  
Amec Foster Wheeler E



Amec Foster Wheeler executed a \$93 million EPC contract for a first-of-its-kind 50-megawatt warm syngas demonstration plant located within an operating facility—overcoming the four-month delay of a key reactor system to finish on time and with 448,000 incident-free manhours.

## INDUSTRIAL - LESS THAN \$15 MILLION

### CIANBRO CORPORATION C

ReEnergy Black River Retrofit Project N  
Fort Drum, N.Y. L  
ReEnergy Holdings LLC CO  
D&S Engineering E

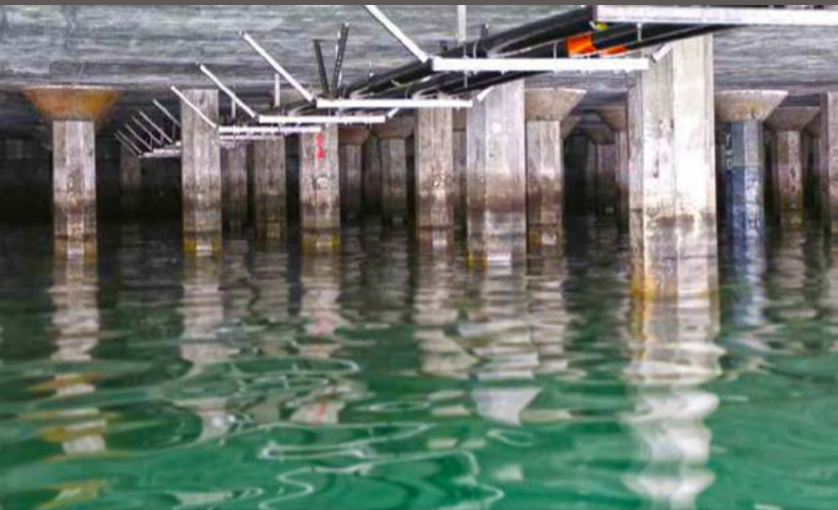


Through teamwork and increased craft personnel, Cianbro adjusted to unpredictable weather and a compressed nine-month schedule to meet the owner's hard deadline for the conversion of an idle coal-fired power plant into a regionally harvested biomass fuel facility.

## INFRASTRUCTURE: HEAVY

### HELIX ELECTRIC C

Port of Long Beach, Pier J Shore to Ship Power Retrofit N  
Long Beach, Calif. L  
Port of Long Beach/Vanir Construction Management CO  
P2S Engineers E



To provide a land-based power source and help reduce pollution from ships, Helix installed 20 shore power outlets, two substations and 3 miles of ductbank—finishing 165 days early despite working amid varying tides and ongoing port traffic.





On this four-story library renovation and LEED Silver addition, Pinkard successfully reconciled the university's \$29 million wish list with a \$14.7 million budget while absorbing additional work, prioritizing student safety and relocating 32 miles of books.



Through comprehensive planning, BIM coordination and proactive quality control, Turner helped this long-awaited \$95 million research and teaching lab become a reality—completing 265,000 square feet of work in two years while offering scholarships and co-ops to construction management students.



Active participation during the preconstruction process helped Roche reduce project costs without compromising on quality, as well as overcome an aggressive schedule to complete this 2,300-seat auditorium and 632-space parking lot on budget and with no lost-time injuries.

# Eagle Winners

General Contractor/  
Construction  
Management  
Categories

**INSTITUTIONAL - \$10-25 MILLION**

- C

**PINKARD CONSTRUCTION COMPANY**
- N

Morgan Library
- L

Fort Collins, Colo.
- CO

Colorado State University
- A

studiotrope Design Collective

**INSTITUTIONAL - \$25-100 MILLION**

- C

**TURNER CONSTRUCTION COMPANY**
- N

Middle Tennessee State University Science Facility
- L

Murfreesboro, Tenn.
- CO

State of Tennessee Board of Regents
- A

Thomas, Miller & Partners, PLLC and Hastings Architecture

**GREENER TOMORROW  
AWARD WINNER**

**INSTITUTIONAL - \$5-10 MILLION**

- C

**ROCHE CONSTRUCTORS, INC.**
- N

The Crossing, A Christian Church Auditorium Expansion
- L

Las Vegas, Nev.
- CO

The Crossing, A Christian Church
- A

The Richardson Partnership, Inc (now Richardson Wetzel Architects, LLC)/Visioneering Studios, Inc.
- E

Henderson Engineers, Inc./Wright Engineers



# Eagle Winners

General Contractor/  
Construction  
Management  
Categories

**INSTITUTIONAL - LESS THAN \$5 MILLION**

**AMERICAN CONSTRUCTORS, INC.** **C**  
The Girls' School of Austin New Campus **N**  
Austin, Texas **L**  
The Girls' School of Austin **CO**  
Haddon+Cowan Architects Collaborative **A**  
DCI Engineers **E**



In just eight months—and despite 23 lost workdays due to rain—American Constructors collaborated with project stakeholders to complete a five-building school campus featuring gardens, play areas and a green roof on schedule and under budget.

**MEGA-PROJECTS - \$100-199 MILLION**

**CIANBRO/MIDDLESEX, A JOINT VENTURE** **C**  
Niantic River Bascule Railroad Bridge **N**  
Replacement **L**  
Waterford, Conn. **CO**  
National Railroad Passenger Corporation (Amtrak) **A**  
Hardesty & Hanover, LLC **E**



From managing active marine traffic to accommodating unforeseen soil conditions, Cianbro/Middlesex coordinated seamlessly with Amtrak and more than 35 subcontractors to replace a 106-year-old bascule bridge with zero lost-time injuries in three years.

**MEGA-PROJECTS - OVER \$200 MILLION**

**CIANBRO/MIDDLESEX, A JOINT VENTURE** **C**  
Brightman Street Bascule Bridge Replacement **N**  
Somerset, Mass. **L**  
Massachusetts Highway Department **CO**  
HNTB Corporation **E**



Cianbro/Middlesex led the five-year effort to build a new 60-foot-high bascule bridge requiring on-barge crane work, river dredging, major land excavation and the installation of a high-tech operating system—all while managing marine traffic and a daily crew of 150 people.



SpawGlass created 4.5 acres of family-friendly walkways and climbing areas to support this wildflower center's educational programming, adhering to the design intent of a New York-based artist as well as rigorous guidelines per the Sustainable Sites Initiative.

# Eagle Winners

General Contractor/  
Construction  
Management  
Categories

**OTHER CONSTRUCTION  
\$2-100 MILLION**

- C SPAWGLASS**
- N** Luci and Ian Family Garden,  
Lady Bird Johnson Wildflower Center
- L** Austin, Texas
- CO** The University of Texas Project Management and  
Construction Services (PMCS)
- A** TBG Partners



Kwest Group exhibited excellence in safety, quality control, value engineering and schedule management while working around unforeseen sub-surface conditions and weather delays to reconstruct 4,000 linear feet of taxiway and 1,100 linear feet of runway pavements.

**OTHER CONSTRUCTION  
LESS THAN \$2 MILLION**

- C KWEST GROUP, LLC**
- N** Rehabilitate Runway 18-36 and Taxiway Bravo
- L** Port Clinton, Ohio
- CO** Erie-Ottawa International Airport Authority
- E** C&S Companies



T.W. Frierson used BIM to ensure timely completion of a 41,000-square-foot pre-engineered addition to this wholesale alcohol distributor's existing metal building, featuring office and conference space, a warehouse and a premier bar to host customer events.

**PRE-ENGINEERED BUILDING**

- C T.W. FRIERSON CONTRACTOR, INC.**
- N** Best Brands Incorporated
- L** Nashville, Tenn.
- CO** Best Brands Incorporated
- A** Design Constructors, Inc.



# Eagle Winners

General Contractor/  
Construction  
Management  
Categories

**PUBLIC WORKS/ENVIRONMENTAL**

**BRASFIELD & GORRIE, LLC** **C**  
Dodson Chapel Equalization Tank **N**  
and Wastewater Pump Station **L**  
Nashville, Tenn. **CO**  
The Metropolitan Government of Nashville and **E**  
Davidson County / Metro Water Services  
Brown and Caldwell



Despite weather delays, multiple subcontractor defaults and having to perform 45-foot-deep excavations adjacent to an operating facility, Brasfield & Gorrie substantially completed this \$13.5 million equalization tank and wastewater pumping station one week ahead of schedule.

**RENOVATION - \$10-100 MILLION**

**PINKARD CONSTRUCTION COMPANY** **C**  
The Transformation of South Lowell **N**  
Denver, Colo. **L**  
Denver Housing Authority **CO**  
Workshop8 **A**



Pinkard improvised and innovated its way through many unforeseen, decrepit conditions on this \$10.8 million, 13-month affordable housing renovation—all while concurrently building 27,500 square feet of new units in the complex's interior courtyard.

**RENOVATION - \$4-10 MILLION**

**FLINTCO, LLC** **C**  
The University of Texas Jesse H. Jones **N**  
Communication Center - Building (CMA/B) **L**  
Austin, Texas **CO**  
The University of Texas System **A**  
The Lawrence Group **E**  
Jose I. Guerra, Inc.



Working adjacent to a busy campus intersection and within two occupied academic buildings, Flintco safely performed a 150,000-square-foot renovation and MEP upgrade—turning over each phase early through the use of BIM and detailed coordination with the owner.



# Eagle Winners

General Contractor/  
Construction  
Management  
Categories



In an effort to open a full-service satellite office, Nor-Son renovated 4,500 square feet above a busy restaurant—overcoming limited site mobility and extensive product lead times to design-build a space highlighting collaboration and interactive technology.

**RENOVATION - LESS THAN \$4 MILLION**

- C** **NOR-SON, INC.**
- N** Nor-Son Metro Office Remodel
- L** Wayzata, Minn.
- CO** Nor-Son, Inc.
- A** Nor-Son, Inc.



In close collaboration with the owner, W.G. Yates & Sons safely finished work on the abandoned shell of a 22-story luxury residential tower in Uptown Dallas that had been left partially completed for three years.

**RESIDENTIAL: MULTI-FAMILY  
AND CONDOMINIUM PROJECTS  
LESS THAN \$100 MILLION**

- C** **W.G. YATES & SONS CONSTRUCTION  
COMPANY (YATES CONSTRUCTION)**
- N** The Residences at Stoneleigh
- L** Dallas, Texas
- CO** Maple Wolf Stoneleigh LLC
- A** GDA Architects, LLC.
- E** Jeff Smith



In spite of a condensed six-month schedule and continuous weather threats, Nor-Son brought high-level design and high-performance construction to Minnesota with the on-time, on-budget completion of this 4,400-square-foot single-family home reminiscent of a French country manor.

**RESIDENTIAL: SINGLE-FAMILY PROJECTS  
LESS THAN \$100 MILLION**

- C** **NOR-SON, INC.**
- N** Carpenter's Point
- L** Wayzata, Minn.
- CO** Steve & Sandra Marshall
- A** Eskuche Design

# Pyramid Winners

Specialty Contractor  
Categories

COMMUNITY/PUBLIC SERVICE

- C** **H.L. WIKER, INC.**
- N** Ann B. Barshinger Cancer Institute at Lancaster General Hospital Suburban Pavilion
- L** Lancaster, Pa.
- CO** Lancaster General Health
- A** Ballinger
- E** Herbert, Rowland & Grubic, Inc.
- GC** Benchmark Construction Company, Inc.

ELECTRICAL

- C** **BERGELECTRIC CORP.**
- N** San Ysidro Land Port of Entry
- L** San Ysidro, Calif.
- CO** U.S. General Services Administration
- A** Miller Hull Partnership
- E** Interface Engineers
- GC** Hensel Phelps

ELECTRICAL: COMMERCIAL - \$2-10 MILLION

- C** **HELIX ELECTRIC**
- N** Sales at Congress WIP Phase III
- L** Las Vegas, Nev.
- CO** Las Vegas Sands Corporation
- A** SH Architecture
- E** MSA

ELECTRICAL: COMMERCIAL - LESS THAN \$2 MILLION

- C** **HELIX ELECTRIC**
- N** Downtown Container Park
- L** Las Vegas, Nev.
- CO** 707 Fremont, LLC
- A** Breslin Builders
- E** Wright Engineers
- GC** Breslin Builders

ELECTRICAL: INDUSTRIAL - \$2-10 MILLION

- C** **ISC CONSTRUCTORS, L.L.C.**
- N** Rubicon MDI-1 DCS Upgrade Project
- L** Geismar, La.
- CO** Rubicon
- GC** Rubicon

ELECTRICAL: INDUSTRIAL - LESS THAN \$2 MILLION

- C** **MMR CONSTRUCTORS, INC.**
- N** Deep Well Injection Systems Project
- L** Uncle Sam, La.
- CO** The Mosaic Company
- E** Plant Services

EXTERIORS: ALL EXTERIORS

- C** **PREMIER STONEWORKS, LLC.**
- N** The Palace at Coral Gables
- L** Coral Gables, Fla.
- CO** The Palace Group
- A** Fullerton Group Architects, Inc.
- E** Schwebke-Shiskin & Associates, Inc.
- GC** Coastal Construction Company

INTERIORS: ACOUSTICAL, DRYWALL, MILLWORK OR PLASTER

- C** **SEARS CONTRACT, INC.**
- N** St. Catherine of Siena Catholic Church
- L** Wake Forest, N.C.
- CO** Roman Catholic Diocese of Raleigh, NC
- A** O'Brien & Keane
- E** Myer Consulting Engineers Corporation
- GC** Clancy & Theys Construction Company

MECHANICAL

- C** **TDINDUSTRIES**
- N** Parkland Central Utility Plant
- L** Dallas, Texas
- CO** Parkland Health and Hospital Systems
- E** Burns & McDonnell
- GC** JE Dunn Construction

MECHANICAL: COMMERCIAL - \$2-10 MILLION

- C** **ACI MECHANICAL, INC.**
- N** ISU Frederiksen Court
- L** Ames, Iowa
- CO** Iowa State University
- A** Invision Architecture
- E** Modus Engineering



# Pyramid Winners

Specialty Contractor  
Categories

**MECHANICAL: COMMERCIAL - LESS THAN \$2 MILLION**

- C** **HOMETOWN PLUMBING & HEATING CO., INC.**
- N** Garfield Elementary School Climate Control Project
- L** Davenport, Iowa
- CO** Davenport Community School District
- A** KPE Engineers Architects
- E** KPE Engineers Architects

**OTHER SPECIALTY CONSTRUCTION: COMMERCIAL - LESS THAN \$10 MILLION**

- C** **C.S. BEATTY CONSTRUCTION, INC.**
- N** Birmingham Shuttlesworth International Airport Terminal Modernization
- L** Birmingham, Ala.
- CO** Birmingham Airport Authority
- A** KPS Group
- E** Khafra Engineering
- GC** Brasfield and Gorrie/BLOC, A Joint Venture

**OTHER SPECIALTY CONSTRUCTION:COMMERCIAL - MORE THAN \$10 MILLION**

- C** **KOSTMAYER CONSTRUCTION LLC.**
- N** L'Auberge Casino & Hotel Foundation Construction
- L** Baton Rouge, La.
- CO** Pinnacle Entertainment
- GC** Manhattan Construction

**OTHER SPECIALTY CONSTRUCTION: INDUSTRIAL - LESS THAN \$10 MILLION**

- C** **BOH BROS. CONSTRUCTION CO., L.L.C.**
- N** LOCAP TMR-TK606 Modification Project
- L** St. James, La.
- CO** LOCAP
- E** Willbros Group, Inc.

**SITEWORK/LANDSCAPE/HARDSCAPE**

- C** **SOUTHERN BOTANICAL**
- N** Royal Oaks Country Club
- L** Dallas, Texas
- CO** Royal Oaks Country Club
- A** Talley Associates Landscape Architects

# Pyramid Winners

General Contractor/Construction  
Management Categories

**COMMERCIAL - \$10-25 MILLION**

- C ADOLFSON & PETERSON CONSTRUCTION**
- N** NBC DFW Studios
- L** Fort Worth, Texas
- CO** KDC Real Estate Development & Investments
- A** Corgan
- E** Blum MEP Engineers

**COMMERCIAL - \$25-100 MILLION**

- C PCL CONSTRUCTION SERVICES, INC.**
- N** Streamsong Resort
- L** Bowling Green, Fla.
- CO** The Mosaic Company
- A** Alfonso Architects, Inc.
- E** TLC Engineering for Architecture

**COMMERCIAL - LESS THAN \$5 MILLION**

- C MCCARTHY BUILDING COMPANIES, INC.**
- N** AT&T Performing Arts Center Box Office Pavilion and Marquees
- L** Dallas, Texas
- CO** AT&T Performing Arts Center
- A** Good Fulton & Farrell Architects
- E** Datum Engineering, Inc.

**COMMUNITY/PUBLIC SERVICE**

- C KAPLAN CONSTRUCTION**
- N** Brookline Teen Center
- L** Brookline, Mass.
- CO** Brookline Teen Center
- A** studioMLA Architects/GMI Architects

**FEDERAL GOVERNMENT/MILITARY - LESS THAN \$10 MILLION**

- C CMS CORPORATION**
- N** Design/Build Combat Communications Transmission System Facility and Combat Communications Combat Support Facility
- L** Andersen AFB, Guam
- CO** NAVFAC Marianas
- A** ARCADIS U.S., Inc.
- E** ARCADIS U.S., Inc.

**HEALTH CARE - \$10-25 MILLION**

- C TURNER CONSTRUCTION COMPANY**
- N** Vanderbilt University Medical Center Cardiac Unit
- L** Nashville, Tenn.
- CO** Vanderbilt University Medical Center
- A** ESa

**HEALTH CARE - \$25-100 MILLION**

- C BRASFIELD & GORRIE, LLC**
- N** Novant Health Haymarket Medical Center
- L** Haymarket, Va.
- CO** Novant Health
- A** Gresham, Smith & Partners
- E** ccrd

**HEALTH CARE - \$25-100 MILLION**

- C BALFOUR BEATTY CONSTRUCTION**
- N** Tradition Medical Center
- L** Port St. Lucie, Fla.
- CO** Martin Health System
- A** HKS Architects, Inc.
- E** TLC Engineering for Architecture

**HEALTH CARE - LESS THAN \$10 MILLION**

- C HITT CONTRACTING INC.**
- N** The GWU Hospital Breast Care Center
- L** Washington, D.C.
- CO** Universal Health Services
- A** WJ Architects, LLC
- E** CCRD Partners

**HISTORICAL RESTORATION/RENOVATION - LESS THAN \$25 MILLION**

- C LANDIS CONSTRUCTION CO., LLC**
- N** 800 Magazine Street Historic Renovation
- L** New Orleans, La.
- CO** KCT Magazine Street LLC
- A** Trapolin-Peer Architects

**INDUSTRIAL - \$15-25 MILLION**

- C REF-CHEM, L.P.**
- N** TARGA LEP 2 Refrigeration System
- L** Galena Park, Texas
- CO** TARGA Resources
- E** KP Engineering

**INDUSTRIAL - \$25-100 MILLION**

- C ROBINS & MORTON**
- N** CARBO Millen Line 1 EPC Proppant Manufacturing Facility
- L** Millen, Ga.
- CO** CARBO
- E** Robins & Morton

**INDUSTRIAL - LESS THAN \$15 MILLION**

- C BRASFIELD & GORRIE, LLC**
- N** Cheyenne Prairie Generating Station - Civil / Substructure Package
- L** Cheyenne, Wyo.
- CO** Cheyenne Light Fuel & Power and Black Hills Power, Inc. (a joint venture)
- E** The Kuljian Corporation

**INFRASTRUCTURE: HEAVY**

- C KEYSTRUCT CONSTRUCTION, INC.**
- N** West Springfield Road Repairs
- L** Seven Valleys, Pa.
- CO** Springfield Township
- E** Scott T. DeBell, P.E., C.S. Davidson, Inc.

**INSTITUTIONAL - \$10-25 MILLION**

- C HOAR CONSTRUCTION, LLC**
- N** Abroms-Engel Institute for the Visual Arts
- L** Birmingham, Ala.
- CO** The University of Alabama at Birmingham
- A** Davis Architects, Inc./Randall Stout/KPS - Bridging Architects
- E** Almon Associates

**INSTITUTIONAL - \$10-25 MILLION**

- C ROY ANDERSON CORP**
- N** Church of the King
- L** Mandeville, La.
- CO** Church of the King
- A** Live Design Group
- E** Hyde Engineering



# Pyramid Winners

General Contractor/Construction Management Categories

**INSTITUTIONAL - \$25-100 MILLION**

- C PIONEER CONSTRUCTION**  
**N** GVSU Mary Idema Pew Library Learning & Information Commons  
**L** Allendale, Mich.  
**CO** Grand Valley State University  
**A** SHW Group  
**E** SHW Group

**INSTITUTIONAL - \$5-10 MILLION**

- C MARCUS CONSTRUCTION**  
**N** Central Minnesota Christian School  
**L** Prinsburg, Minn.  
**CO** Central Minnesota Christian School  
**A** Widseth Smith Nolting  
**E** Widseth Smith Nolting

**INSTITUTIONAL - LESS THAN \$5 MILLION**

- C ALPHA BUILDING CORPORATION**  
**N** University of Texas-Pan American Executive Tower Renovation  
**L** Edinburg, Texas  
**CO** University of Texas-Pan American  
**E** CLH Engineering Inc

**MEGA-PROJECTS - \$100-199 MILLION**

- C S & B ENGINEERS AND CONSTRUCTORS, LTD.**  
**N** Chevron Phillips Chemical 1-Hexene  
**L** Baytown, Texas  
**CO** Chevron Phillips Chemical Company, LP  
**E** S & B Engineers and Constructors, Ltd.

**MEGA-PROJECTS - \$100-199 MILLION**

- C HOAR CONSTRUCTION**  
**N** NEA Baptist Memorial Hospital and Clinic  
**L** Jonesboro, Ark.  
**CO** Baptist Memorial Health Care  
**A** Earl Swensson Associates, Inc.  
**E** Phoenix Design Group

**MEGA-PROJECTS - OVER \$200 MILLION**

- C TURNER CONSTRUCTION COMPANY**  
**N** Carpenter Technology Athens Operations Program  
**L** Tanner, Ala.  
**CO** Carpenter Technology Corporation  
**A** Barge Waggoner Sumner & Cannon (BWSC)  
**E** Barge Waggoner Sumner & Cannon (BWSC)

**OTHER CONSTRUCTION - \$2-100 MILLION**

- C BRASFIELD & GORRIE, LLC**  
**N** College Football Hall of Fame and Chick-fil-A Fan Experience  
**L** Atlanta, Ga.  
**CO** Atlanta Hall Management  
**A** tvsdesign/Gallagher & Associates  
**E** Kimley-Horn/SYKES Consulting, Inc./Syska Hennessy Group

**OTHER CONSTRUCTION - \$2-100 MILLION**

- C M.A. MORTENSON COMPANY**  
**N** Coors Field Upper Right Field Fan Enhancements  
**L** Denver, Colo.  
**CO** Colorado Rockies Baseball Club  
**A** Populous

**OTHER CONSTRUCTION - LESS THAN \$2 MILLION**

- C WOHLSEN CONSTRUCTION COMPANY**  
**N** Presidential Memorial Remains Garden and Veterans Plaza  
**L** Lancaster, Pa.  
**CO** Woodward Hill Cemetery  
**A** Derck & Edson Associates, LLP

**OTHER CONSTRUCTION - LESS THAN \$2 MILLION**

- C AUI CONTRACTORS**  
**N** JFK Tribute & General Worth Square  
**L** Fort Worth, Texas  
**CO** Downtown Fort Worth Initiatives, Inc.  
**E** Randy Sorenson, Jacobs Engineering

**PUBLIC WORKS/ENVIRONMENTAL**

- C CROWDER CONSTRUCTION COMPANY**  
**N** RB Simms WTP & Lake Blalock WTP Improvements  
**L** Chesnee, S.C.  
**CO** Spartanburg Water System  
**E** URS

**RENOVATION - \$10-100 MILLION**

- C SPAWGLASS**  
**N** San Antonio International Airport Terminal A Renovation  
**L** San Antonio, Texas  
**CO** City of San Antonio Capitol Improvement Management Department  
**A** Reynolds, Smith and Hills

**RENOVATION - \$4-10 MILLION**

- C E.E. REED CONSTRUCTION, L.P.**  
**N** Camden Corporate Headquarters  
**L** Houston, Texas  
**CO** Camden Property Trust  
**A** Gensler

**RENOVATION - LESS THAN \$4 MILLION**

- C SPAWGLASS**  
**N** The University of Texas at Austin Center for Students in Recovery  
**L** Austin, Texas  
**CO** The University of Texas at Austin  
**A** Lym Architecture  
**E** Obrentz Design Group

**RESIDENTIAL: MULTI-FAMILY AND CONDOMINIUM PROJECTS LESS THAN \$100 MILLION**

- C HOAR CONSTRUCTION**  
**N** M2 Apartments  
**L** Denver, Colo.  
**CO** Stoneleigh Companies, LLC  
**A** Humphrey & Partners Architects  
**E** MSP Engineering Group

**RESIDENTIAL: MULTI-FAMILY AND CONDOMINIUM PROJECTS - LESS THAN \$100 MILLION**

- C FACCHINA CONSTRUCTION**  
**N** Gables Ponce  
**L** Coral Gables, Fla.  
**CO** Gables Residential  
**A** Behar-Font & Partners, P.A.  
**E** De Los Reyes Engineering, Inc./Ariño & Associates, Inc./RPJ, Inc./Vital Engineering Corporation

# A Foundation Of Safety

## **2014 NATIONAL SAFETY EXCELLENCE AWARD RECIPIENTS**

From exceptional safety records to rigorous training and education programs, winners of the National Safety Excellence Awards excelled in all areas of ABC's Safety Training Evaluation Process (STEP), demonstrating an extraordinary commitment to safety.



## Panel of Judges

### **SHELLEY SUTTON**

*Safety Director*  
hth companies, inc.  
Union, Mo.  
2014-2015 ABC National Environment, Health  
& Safety Committee Chairwoman

### **TODD MEEK**

*Corporate Safety Director*  
Lauren Engineers & Constructors, Inc.  
Abilene, Texas

### **RALPH RILEY**

*Safety/Workforce Programs Manager*  
S&B Engineers & Constructors, Ltd.  
Houston, Texas

### **RICH BALDWIN**

*Corporate Director, HSE*  
PCL Construction Enterprises  
Denver, Colo.

### **ANTHONY LOMBARDI**

*Corporate Safety Director*  
Centennial Contractors Enterprises, Inc.  
Reston, Va.

### **STEVE WILTSHIRE**

*Regional Safety Manager*  
AvalonBay Communities, Inc.  
Arlington, Va.

### **MELANIE LAIRD**

*Executive Vice President*  
FC Background, LLC  
Dallas, Texas

### **FRANK WAMPOL**

*Corporate Safety Director*  
B.L. Harbert International  
Birmingham, Ala.

### **GARY CLEVENGER**

*National Risk Control Director-Construction*  
CNA  
Lenexa, Kan.

### **TROY ALLEN**

*Corporate Safety Manager*  
PALA Interstate, LLC  
Baton Rouge, La.

### **JIM THOMPSON**

*EH&S Director*  
Kwest Group, LLC  
Perrysburg, Ohio

### **BOB FITZGERALD**

*Manager-Project Safety & Health*  
Southern Company  
Birmingham, Ala.

### **RON ENGLISH**

*Thermaltech, Inc.*  
Union, Mon.

### **JERRY RIVERA**

*Regional Safety Director*  
Power Design, Inc.  
St. Petersburg, Fla.

### **BILL ROACHELL**

*President*  
ABC Arkansas Chapter  
Little Rock, Ark.

### **DANNY OUBRE**

*Vice President of Safety*  
EXCEC Group Services LLC  
Baton Rouge, La.

### **DARYL GUERCIO**

*HSE Compliance Manager*  
Chicago Bridge & Iron (CB&I)  
Baton Rouge, La.

# Pinnacle Winners

NAICS 237

## HEAVY AND CIVIL ENGINEERING CONTRACTOR

**LAUREN ENGINEERS & CONSTRUCTORS, INC.**  
Abilene, Texas

**ROBERT HEELY CONSTRUCTION, LP**  
Bakersfield, Calif.

**S & B ENGINEERS AND CONSTRUCTORS, LTD.**  
Houston, Texas

NAICS 238

## SPECIALTY CONTRACTOR

**COLOR WORKS PAINTING, INC**  
New Castle, Del.

**HTH COMPANIES, INC.**  
Union, Mo.

**KWEST GROUP, LLC**  
Perrysburg, Ohio

**POLK MECHANICAL COMPANY**  
Houston, Texas

# Excellence Winners

NAICS 236

## GENERAL CONTRACTOR

**D.E. HARVEY BUILDERS, INC.**  
Houston, Texas

**RLS CONSTRUCTION GROUP**  
Mechanisburg, Pa.

**W. G. YATES & SONS CONSTRUCTION COMPANY**  
Biloxi, Miss.

NAICS 237

## HEAVY AND CIVIL ENGINEERING CONTRACTOR

**CIANBRO CORPORATION**  
Pittsfield, Maine

**REPCON, INC.**  
Corpus Christi, Texas

**W.T. BYLER CO.**  
Houston, Texas

NAICS 238

## SPECIALTY CONTRACTOR

**ALPINE PAINTING & SANDBLASTING**  
Paterson, N.J.

**INTERSTATES COMPANIES**  
Sioux Center, Iowa

**MTECH MECHANICAL, INC.**  
Westminster, Colo.

**POLK MECHANICAL COMPANY**  
Grand Prairie, Texas

**STARCON INTERNATIONAL, INC.**  
La Porte, Texas

# Merit Winners

NAICS 236

## GENERAL CONTRACTOR

**BL HARBERT INTERNATIONAL**  
Birmingham, Ala.

**CENTENNIAL CONTRACTORS ENTERPRISES, INC.**  
Reston, Va.

**SAMET CORPORATION**  
Greensboro, N.C.

**SPAWGLASS**  
Houston, Texas

**THE BREVARD COMPANY**  
Brazoria, Texas

**THREE RIVERS CORPORATION**  
Midland, Mich.

**WARFEL CONSTRUCTION COMPANY**  
East Petersburg, Pa.

NAICS 237

## HEAVY AND CIVIL ENGINEERING CONTRACTOR

**BARRIERE CONSTRUCTION CO., LLC**  
Metairie, La.

**PERFORMANCE CONTRACTORS, INC.**  
Baton Rouge, La.

NAICS 238

## SPECIALTY CONTRACTOR

**AGGREGATE TECHNOLOGIES, INC.**  
Houston, Texas

**CHAMBERLIN ROOFING & WATERPROOFING**  
Dallas, Texas

**KEYSTONE CONCRETE PLACEMENT**  
Schertz, Texas

**MKD ELECTRIC, INC.**  
Elgin, Ill.

**MMR CONSTRUCTORS, INC.**  
Baton Rouge, La.

**WESTGATE, LLC**  
Port Allen, La.



# Championing a Diverse Industry

## **2014 NATIONAL DIVERSITY EXCELLENCE AWARD RECIPIENTS**

The ABC National Diversity Excellence Awards

recognize members that display exemplary  
diversity leadership in their workforce, supply  
chain and community with best-in-class  
recruitment policies, retention practices,  
and training and mentoring programs.

## Panel of Judges

**CHARLES EATON, CERTIFIED SDP**

*Director Corporate Supplier Diversity*  
Hensel Phelps  
Dallas, Texas

**ANN MCNEILL**

*Founder*  
National Association for Black Women in  
Construction  
Miami, Fla.

**IRMA WEHMEYER**

*Estimator/Project Manager*  
hth companies, inc.  
Union, Mo.

**RAY ZAMORA**

*President & Owner*  
AnchorBuilt Inc.  
Albuquerque, N.M.

## Winners

**ASSOCIATE**

**ATKINSON, ANDELSON, LOYA, RUUD & ROMO**  
Cerritos, Calif.

**SUPPLIER**

**UNITED RENTALS**  
Stamford, Conn.

**SUBCONTRACTOR UNDER \$14 MILLION**

**LEI COMPANIES, INC.**  
Denver, Colo.

**SUBCONTRACTOR OVER \$14 MILLION**

**TDINDUSTRIES, INC.**  
Dallas, Texas

**EMERGING SUBCONTRACTOR**

**CAP8 DOORS & HARDWARE**  
Washington, D.C.

**GENERAL CONTRACTOR UNDER \$33 MILLION**

**WU & ASSOCIATES**  
Cherry Hill, N.J.

# Contractor of the Year Award



Through the leadership of five founders and the dedication of 2,600 employees, Brasfield & Gorrie has evolved from a small commercial renovation contractor into an industry leader generating more than \$2 billion in annual revenue—all while maintaining a “SPIRIT” of safety, performance, integrity, respect, innovation and teamwork.

Founder Miller Gorrie’s dedication to growing the company organically continues to drive the firm’s success, with 100 percent of expansion during the past five decades stemming from the upward mobility of high-performing staff and strategic mapping of potential markets. The company excels at general contracting, design-build, construction management, integrated project delivery and lean construction throughout the commercial, education, government, health care, heavy/civil and sports/entertainment sectors.

Jim Gorrie, who took over the presidency from his father in 1994, remains committed to building exceptional people, trusting relationships, great projects and strong communities through the firm’s diversity programs, community service efforts, environmental stewardship and technological expertise.

Brasfield & Gorrie joined ABC in 1975 and is an active member of 10 chapters in Alabama, Florida, Georgia, Mississippi, North Carolina, Tennessee, Texas and Virginia. In addition, Regional President Jack Darnall served as ABC National Chairman in 2006.



# 2014 STEP Diamond Recipients

AC Split Bolt, Inc.	Foulger-Pratt Contracting, LLC	Notch Mechanical Constructors
Agua Fina Irrigation & Landscape, L.L.C.	G.E. Insulation Co.	Nova Group, Inc.
Allan A. Myers	Gaylor Electric Inc.	Old Dominion Firestopping, LLC
Alliance Electric, Inc.	HarenLaughlin Construction	Pala-Interstate, LLC
Alliance Roofing & Sheet Metal, Inc.	Hayward Electric Company	PCE Constructors, Inc.
Alpine Painting & Sandblasting	Hensel Phelps	PCL Construction Services, Inc.
American Infrastructure	HITT Contracting Inc.	PCL Industrial Construction Company
APAC-Texas, Inc.	Hoar Construction, LLC	Performance Contractors, Inc.
Ard Contracting, Inc.	Holes Golden Triangle, LLC	Petrin Corporation
Ardent Services, LLC	Holes Incorporated	Polk Mechanical Company
BakerTriangle	Huser Construction Co., Inc.	QCI Thermal Systems
Balfour Beatty Construction	I.E. - Pacific, Inc.	R. J. Grondin & Sons
Barriere Construction Company, LLC	IES Industrial, Inc.	REPCON, INC.
Bay Aggregate, Inc.	Industrial Controls of Okla., Inc.	Robert Heely Construction, LP
Bergelectric Corporation	Insulations, Inc.	RUS Industrial, LLC
BL Harbert International	ISC Constructors, LLC	S&B Engineers and Constructors, Ltd.
Braun Electric Company, Inc.	ISO Panels	Safway Services LLC.
Broadmoor, LLC	Ivey Mechanical Company, LLC	Saulsbury Industries
Brock Services, Ltd.	J & J Fire Protection Company, Inc.	Schultz Brothers Electric Co.
BRYCON Construction	J.M. Coull, Inc.	SDV Construction Inc
Burton Construction	Jacobs	SEDALCO, L.P.
C. S. Beatty Construction, Inc.	Jamail & Smith Construction	Shawhan Sheet Metal LLC
C.M. High, Inc.	JAMCo, Inc.	Sippel Development Co., Inc.
CB&I	JB Construction LLC	Skanska USA Building Inc.
Centennial Contractors Enterprises, Inc.	JESCO, Inc.	Southern Industrial/Southern Crane
Chamberlin Roofing & Waterproofing	Johnston Products of Dallas, Inc.	Southway Builders, Inc.
Cherry Companies	Juneau Construction Company, LLC	SpawGlass Construction Corporation
Classic Industrial Services, Inc.	Kaplan Construction	Standard Constructors, Inc.
Clouse Construction Corp.	KBR Building Group	STARCON International, Inc.
CME Corporation	Kelley Construction, Inc.	Suffolk Construction Co., Inc.
Color Works Painting, Inc.	Kronenberger & Sons Restoration, Inc.	Tetra Tech
CRA Services	Kwest Group, LLC	The Mundy Companies
D.E. Harvey Builders, Inc.	Lauger Companies, Inc.	Thermal-Tec/Michigan, Inc.
DiMarco Constructors, LLC	Lauren Engineers & Constructors, Inc.	Thermon Heat Tracing Services
DiSabatino Construction Company	LD Kerns Contractors	Thos. S. Byrne, Ltd.
E. E. Reed Construction, L. P.	LPR Construction Co.	Titan Contracting/Horn Industrial Services
Eastern Industrial Services, Inc.	MAC Construction & Excavating, Inc.	Titus Electrical Contracting, LP
Electrical Energy Systems Corp.	Maintenance Enterprises	TNT Crane & Rigging, Inc.
Elkins Constructors, Inc.	Manhattan Construction Company	Triad Electric & Controls, Inc.
Elzinga & Volkers, Inc.	Manhattan Construction, Inc.	Turner Construction Company
EMCOR Services New England	Marathon Electrical Contractors, Inc.	W.G. Yates & Sons Construction
Mechanical	Marcus Construction Co., Inc.	Company
EMCOR Services/Dynalectric Company-	McKee Electric Company	W.T. Byler Co.
Georgia	McKinney Drilling Company	Walker & Company, Inc.
Enterprise Commercial Paving	MDI, Inc. General Contractors	Western Summit Constructors, Inc.
Evergreen Industrial Services	Merit Electrical, Inc.	Westgate, LLC
EXCEL Contractors, Inc.	Meyer Najem Construction	White Construction Company
Express Construction Co., Inc.	Midstate Mechanical, Inc.	Wilson Electric
Facchina Construction of Florida, L.L.C.	Miller-Valentine Group	Windsor Electric Co., Inc.
Fisher Contracting Co.	MMR Constructors, Inc.	Wonder Electric Co., Inc.
Flintco, LLC	Mortenson Construction	Zachry Industrial, Inc.
Flynn Construction, Inc.	Multi-Weld Services, Inc.	
Fogel-Anderson Construction Co.	Nickle Electrical Companies	
Fortune-Johnson General Contractors		

## INDEX OF ALL WINNERS

<b>A</b>		
ACI Mechanical, Inc.		20
Adolfson & Peterson Construction		22
Aggregate Technologies, Inc.	8,27	
Alpha Building Corporation		23
Alpine Painting & Sandblasting		26
Amec Foster Wheeler		14
American Constructors, Inc.		16
Atkinson, Andelson, Loya, Ruud & Romo		29
AUI Contractors		23
<b>B</b>		
Balfour Beatty Construction		22
Barriere Construction Co., LLC		27
Bergelectric Corp.		20
Bergstrom Electric, Inc.		5
BL Harbert International		27
Boh Bros. Construction Co., L.L.C.		21
Brasfield & Gorrie, LLC	9,11,12,18,22,23,30	
Brindley Construction, LLC		13
<b>C</b>		
C.S. Beatty Construction, Inc.		21
Camarata Masonry Systems, Ltd.		6
Cap8 Doors & Hardware		29
Centennial Contractors Enterprises, Inc.		27
Century Contractors, Inc.		7
Chamberlin Roofing & Waterproofing		27
Cianbro Corporation	14,26	
Cianbro/Middlesex		16
CMS Corporation		22
Color Works Painting, Inc		26
Crowder Construction Company		23
Custom Aire, Inc.		7
<b>D</b>		
D.E. Harvey Builders, Inc.		26
<b>E</b>		
E.E. Reed Construction, L.P.	10,11,23	
Early Services, Inc.		4
EXCEL Contractors, Inc.		4
<b>F</b>		
Facchina Construction		23
Flintco, LLC		18
<b>H</b>		
H.L. Wiker, Inc.		20
Helix Electric	4,14,20	
HITT Contracting, Inc.		22
Hoar Construction		22,23
Hometown Plumbing & Heating Co., Inc.		21
hth companies, inc.		26
<b>I</b>		
Interstates Companies		26
ISC Constructors, L.L.C.	5,8,20	
<b>K</b>		
Kaplan Construction		22
Kenpat USA, LLC		6
Keystone Concrete Placement		27
Keystrect Construction, Inc.		22
Kostmayer Construction LLC.		21
Kwest Group, LLC	11,17,26	

<b>L</b>		
Landis Construction Co., LLC		22
Lauren Engineers & Constructors, Inc.		26
Lei Companies, Inc		29
<b>M</b>		
M.A. Mortenson Company		23
Marcus Construction		23
McCarthy Building Companies, Inc.		22
Middlesex		16
Milender White Construction Co.		13
MKD Electric, Inc.		27
MMR Constructors, Inc.	20,27	
Mtech Mechanical, Inc.		26
<b>N</b>		
Nor-Son, Inc.		19
<b>P</b>		
PCL Construction Services, Inc.		22
Performance Contractors, Inc.		27
Pinkard Construction Company	15,18	
Pioneer Construction		23
Polk Mechanical Company		26
Premier Stoneworks, LLC.		20
<b>R</b>		
Ref-Chem, L.P.		22
REPCON, Inc.		26
RLS Construction Group		26
Robert Heely Construction, LP		26
Robins & Morton		22
Roche Constructors, Inc.		15
Roy Anderson Corp		22
<b>S</b>		
S & B Engineers and Constructors, Ltd.	23,26	
Samet Corporation		27
Sears Contract, Inc.		20
Southern Botanical		21
SpawGlass	12,17,23,27	
STARCON International, Inc.		26
<b>T</b>		
T.W. Frierson Contractor, Inc.		17
TDIndustries	20,29	
The Brevard Company		27
Three Rivers Corporation		27
Turner Construction Company	10,15,22,23	
Turner Industries Group, L.L.C.		13
<b>U</b>		
United Rentals		29
<b>W</b>		
W. G. Yates & Sons Construction Company	19,26	
W.T. Byler Co.		26
Waldrop Mechanical Services		7
Warfel Construction Company	6,10,27	
Wayne Brothers, Inc.		8
Westgate, LLC		27
Wohlsen Construction Company		23
Wondra Construction Inc.		9
Wu & Associates		29

THANK YOU TO OUR STRATEGIC PARTNERS



We can show you more.®



Fringe Benefit Group



**Tradesmen  
International®**  
*Productivity is Our Priority*

**VIEWPOINT**  
CONSTRUCTION SOFTWARE®

THANK YOU TO OUR SPONSORS

————— Eagle Sponsor —————



————— Excellence Sponsor —————



————— Merit Sponsor —————



————— Safety Sponsor —————



We can show you more.®

————— Diversity Sponsor —————



————— After Party Sponsor —————



**KWEST GROUP**  
*Civil Construction and Environmental Services*





440 FIRST ST. NW, SUITE 200  
WASHINGTON, D.C., 20001  
(202) 595-1505  
[WWW.ABC.ORG](http://WWW.ABC.ORG)