

Parex USA Water Resistive Barriers Details

Cold-Fluid Applied Waterproofing
CSI SECTION 07 14 16

Fluid-Applied Membrane Air Barriers
CSI SECTION 07 27 26

WEATHER TECH WRBs

Note: The design specifications and construction of the wall shall comply with all building code and standards. Parex USA installation guidelines are for general information and guidance only and Parex USA specifically disclaims all liability for the use of this design, for design engineering, and for workmanship of any project. The wall assembly shall be designed to prevent condensation within the assembly. The designer and the user shall provide final drawings and specifications.

The drawings, and any related notes, or text contained thereon are based upon typical requirements of Parex exterior insulation and finish systems and are published strictly as a guide for architectural and construction industry professionals to illustrate typical or general design conditions.

These details are not to be used by themselves, and do not constitute design instructions for Weather Tech WRBs application. These details must be used in conjunction with Parex USA current product specifications, product data sheets, and application instructions.

Any details shown are strictly for the purpose of illustrating typical Weather Tech WRBs. Any other materials shown in any details are incidental to the details, and are included only for clarity of the Weather Tech WRBs. Please consult with the manufacturers and/or suppliers of any separate materials for their product specifications and applications instructions.

For specific details with EIFS or stucco, see the specific assembly details on parex.com, Teifs.com, elrey.com or lahabrastucco.com

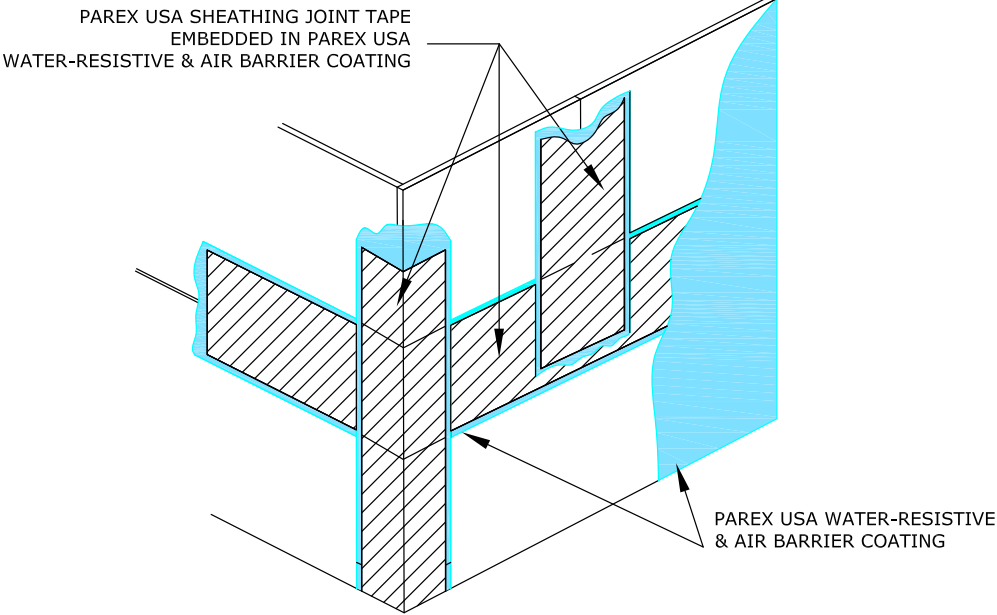
Where site or design conditions not shown in these details are present, or any unusual design is involved, please consult with Parex USA Technical Department for assistance.

PAREX USA DOES NOT WARRANT THE FITNESS OF SUITABILITY OF THESE DETAILS FOR CONSTRUCTION, OR ASSUME ANY LIABILITY FOR USE OF THESE DETAILS. IT IS THE SOLE RESPONSIBILITY OF ANY ARCHITECTURAL OR CONSTRUCTION INDUSTRY PROFESSIONAL TO APPLY THEIR PROFESSIONAL KNOWLEDGE IN UTILIZING THE INFORMATION CONTAINED IN THESE DETAILS.

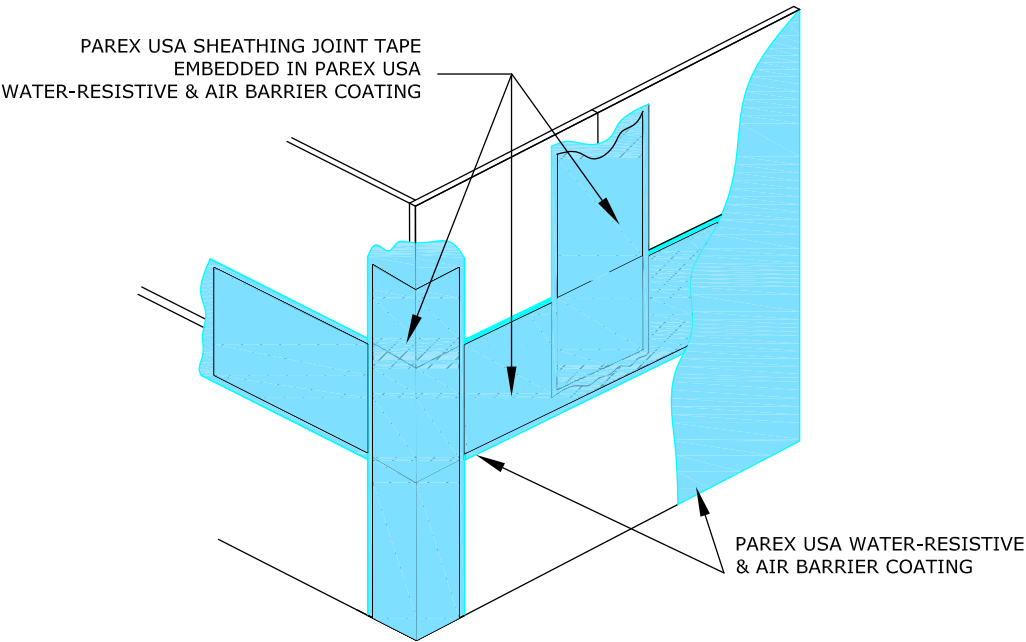


CONTENTS Parex USA WRB System Details

SUBJECT	DETAIL	PAGE
GENERAL CONSTRUCTION	WRB 1.01 SHEATHING JOINT TREATMENT	4
	WRB 1.02 ON MASONRY WITH PAREX USA STUCCO LEVEL COAT.....	5
	WRB 1.03 ON MASONRY	5
TERMINATIONS AT FOUNDATIONS	WRB 1.04 FOUNDATION	6
	WRB 1.05 TERMINATION AT WALL BASE FLASHING.....	6
	WRB 1.06 TERMINATION AT FOUNDATION FLASHING.....	7
	WRB 1.07 TERMINATION AT STUCCO WEEP SCREED ON FOUNDATION.....	7
	WRB 1.08 TERMINATION AT THROUGH-WALL FLASHING FOUNDATION MASONRY LEDGE	8
	WRB 1.09 TERMINATION AT THROUGH-WALL FLASHING AND FOUNDATION	8
	WRB 1.10 SIDEWALK FLOORLINE FOUNDATION	9
WINDOW AND DOOR TERMINATIONS	WRB 1.11 ROUGH OPENING TREATMENT – 1 OF 5.....	9
	WRB 1.12 ROUGH OPENING TREATMENT – 2 OF 5.....	10
	WRB 1.13 ROUGH OPENING JAMB & SILL – 3 OF 5.....	10
	WRB 1.14 ROUGH OPENING JAMB & SILL – 4 OF 5.....	11
	WRB 1.15 ROUGH OPENING TREATMENT – 5 OF 5.....	11
	WRB 1.16 TERMINATION AT SILL PAN FLASHING END DAM.....	12
	WRB 1.17 HEAD FLASHING	12
	WRB 1.18 SEAL AT MASONRY HEAD FLASHING	13
EXPANSION JOINTS	WRB 1.19 EXPANSION JOINT A	13
	WRB 1.20 EXPANSION JOINT B	14
ROOFS	WRB 1.21 FLOOR LINE DEFLECTION JOINTS.....	14
	WRB 1.22 TERMINATION AT ROOFS	15
	WRB 1.23 LOW PARAPET HIGH WALL INTERSECTION – 1 OF 3	15
	WRB 1.24 LOW PARAPET HIGH WALL INTERSECTION – 2 OF 3	16
	WRB 1.25 LOW PARAPET HIGH WALL INTERSECTION – 3 OF 3	16
PENETRATIONS	WRB 1.26 SEAL AT DUCT PENETRATION.....	17
	WRB 1.27 SEAL AT PIPE PENETRATION	17
	WRB 1.28 TYPICAL APPLICATION AT BRICK TIES.....	18
TRANSITIONS TO DISSIMILAR WATER-RESISTIVE BARRIERS	WRB 1.29 HORIZONTAL TRANSITION TO NON-ADHERED WATER-RESISTIVE BARRIER SHEET ABOVE	18
	WRB 1.30 HORIZONTAL TRANSITION TO NON-ADHERED WATER-RESISTIVE BARRIER SHEET ABOVE.....	19
	WRB 1.31 VERTICAL TRANSITION TO NON-ADHERED WATER-RESISTIVE BARRIER SHEET	19

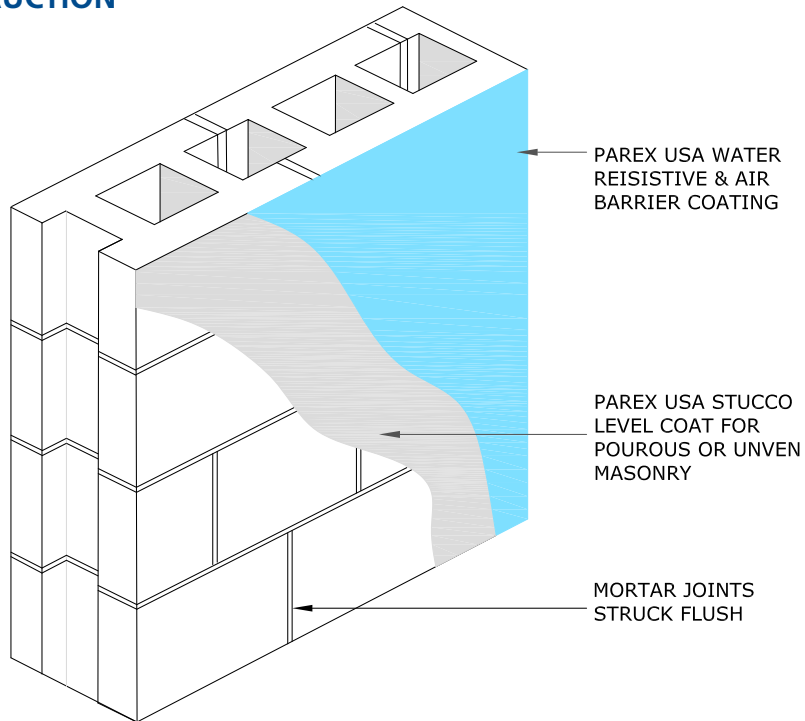


WRB 1.01A SHEATHING JOINT TREATMENT

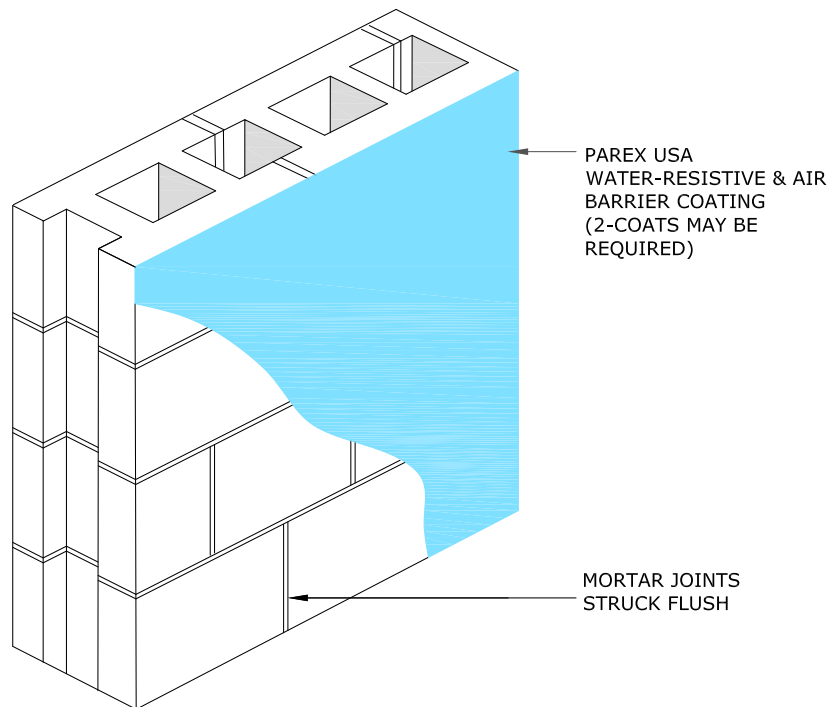


WRB 1.01B SHEATHING JOINT TREATMENT

GENERAL CONSTRUCTION

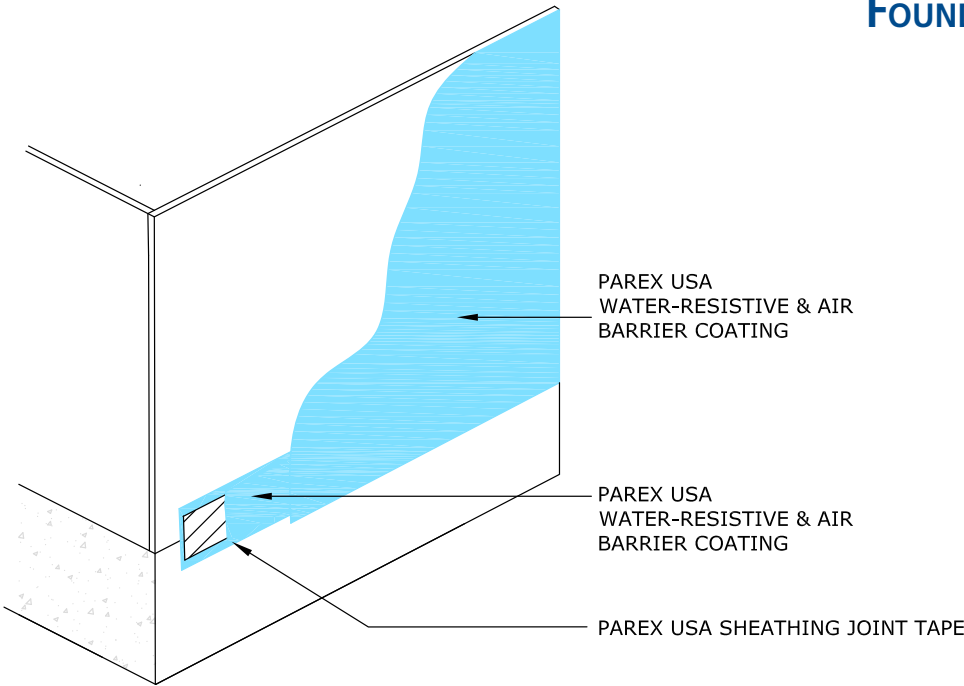


WRB 1.02 ON MASONRY WITH PAREX USA STUCCO LEVEL COAT



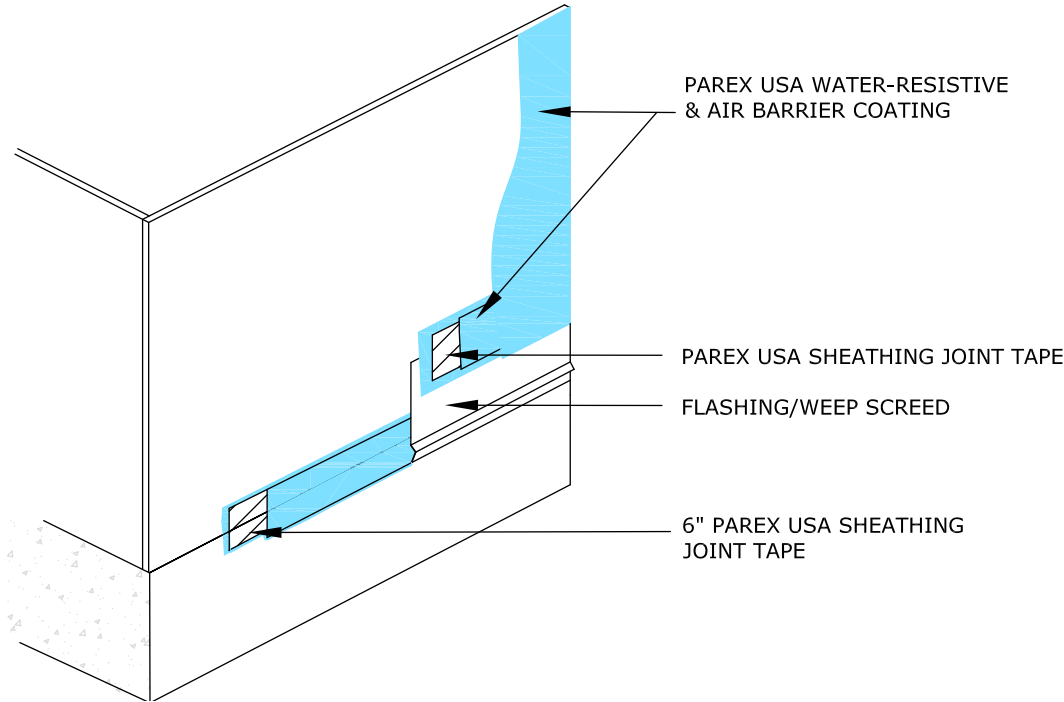
WRB 1.03 ON MASONRY

Note:
Parex USA Flashing Membrane/Primer may be used as an alternative to Parex USA Reinforced Water Resistive and Air Barrier coating.



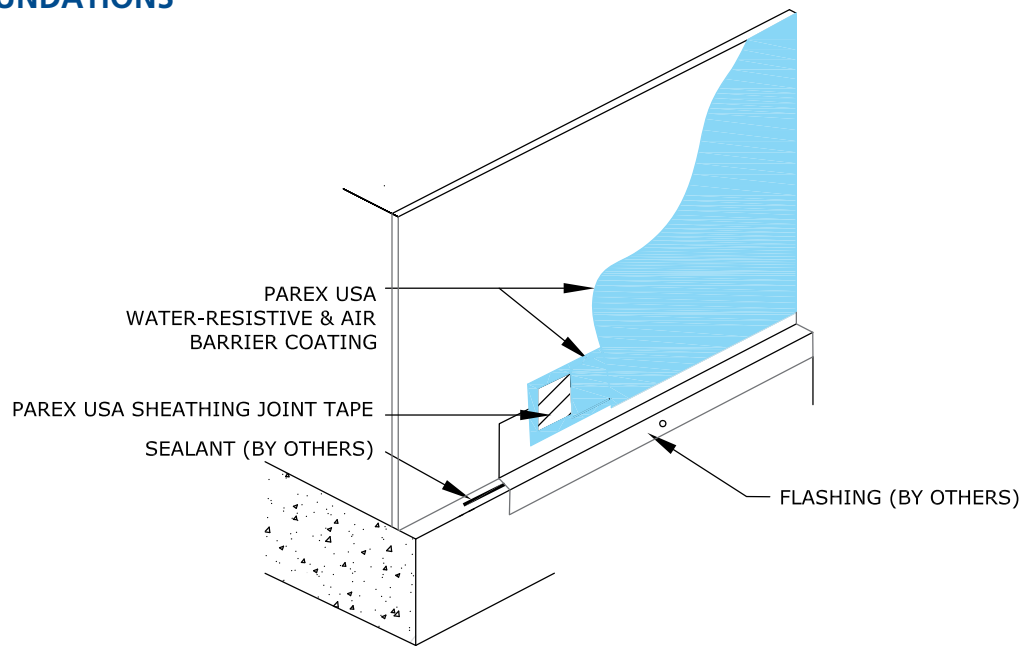
WRB 1.04 FOUNDATION

Note:
Parex USA Flashing Membrane/Primer may be used as an alternative to Parex USA Reinforced Water Resistive and Air Barrier coating.



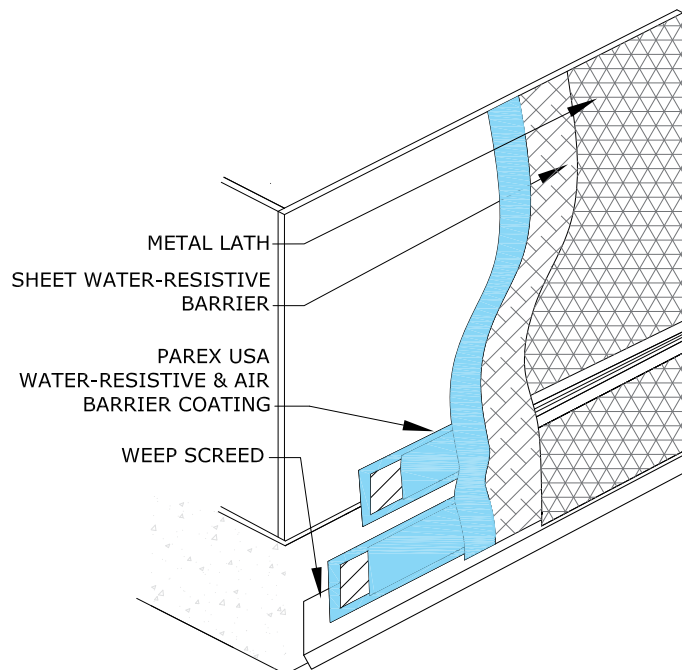
WRB 1.05 TERMINATION AT WALL BASE FLASHING

TERMINATIONS AT FOUNDATIONS



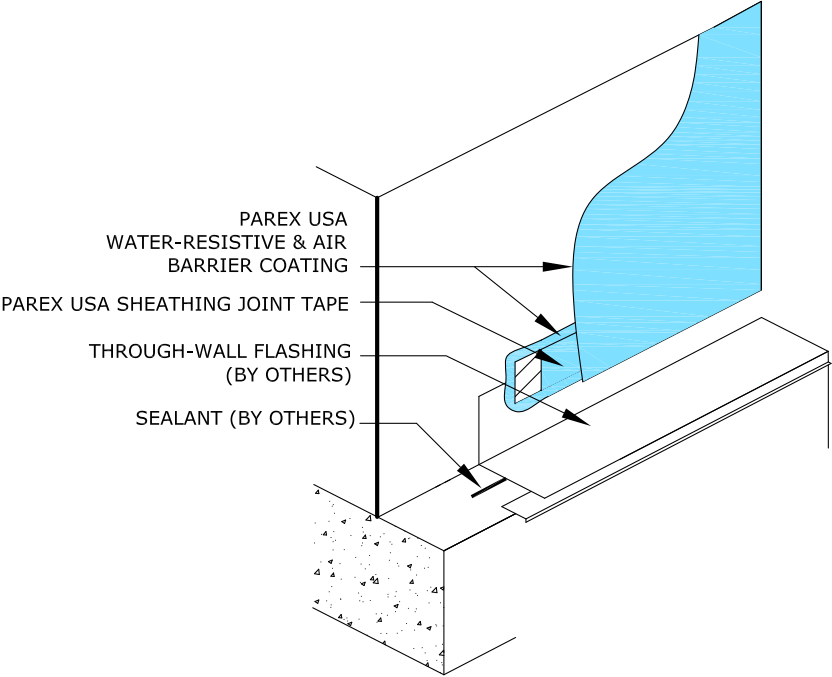
Note:
Parex USA Flashing Membrane/Primer may be used as an alternative to Parex USA Reinforced Water Resistive and Air Barrier coating.

WRB 1.06 TERMINATION AT FOUNDATION FLASHING

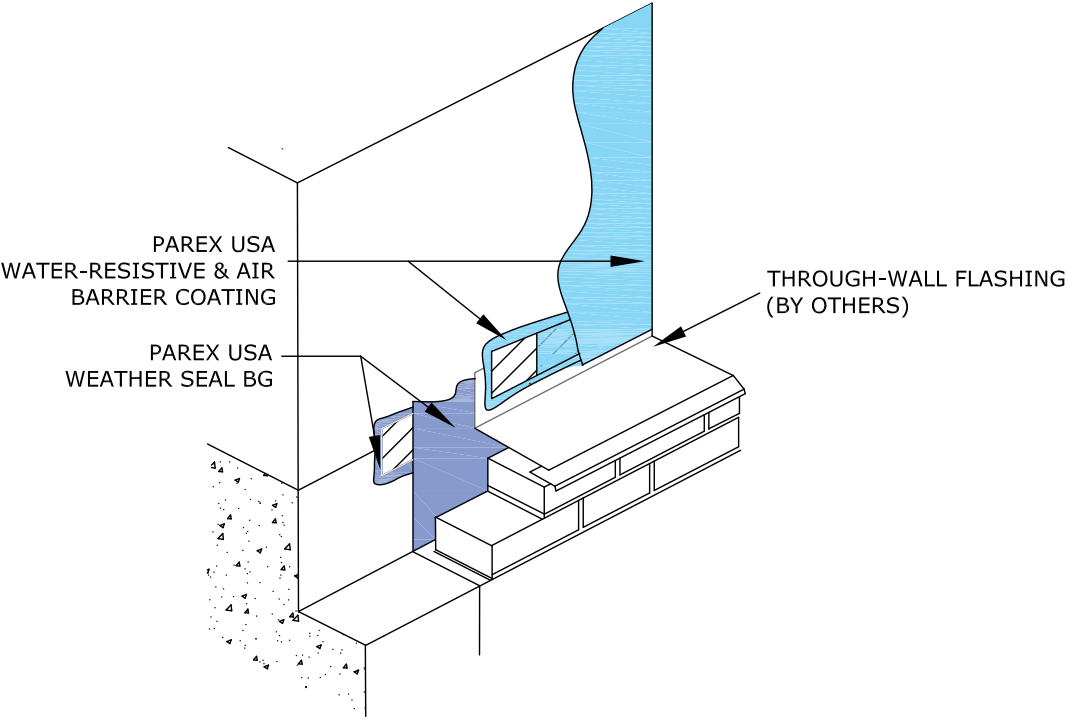


Note:
Vapor permeable Water-resistive barrier/ slip sheet, minimum #15 Grade D building paper, required behind claddings such as portland cement stucco and adhered masonry veneer.

WRB 1.07 TERMINATION AT STUCCO WEEP SCREED ON FOUNDATION

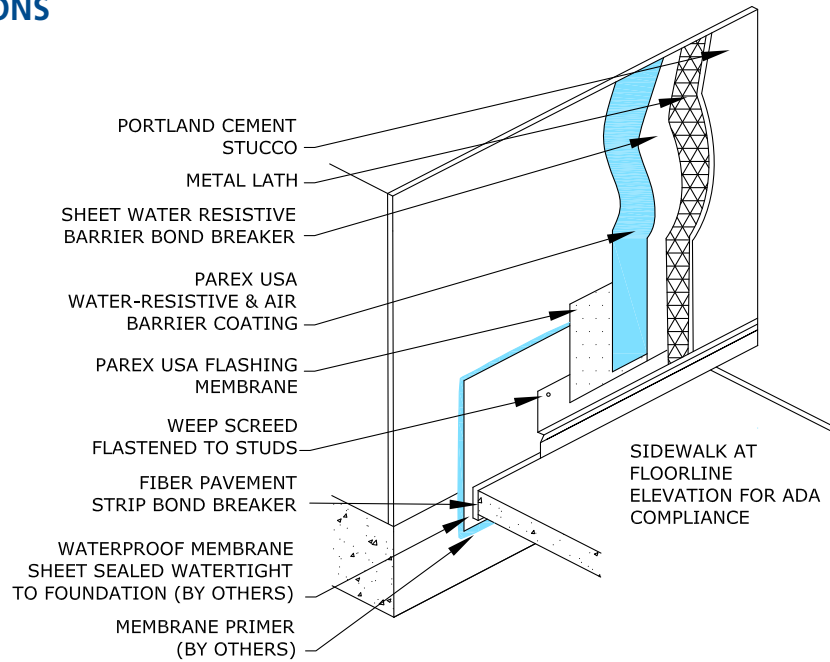


WRB 1.08 TERMINATION AT THROUGH-WALL FLASHING FOUNDATION MASONRY LEDGE



WRB 1.09 TERMINATION AT THROUGH-WALL FLASHING AND FOUNDATION

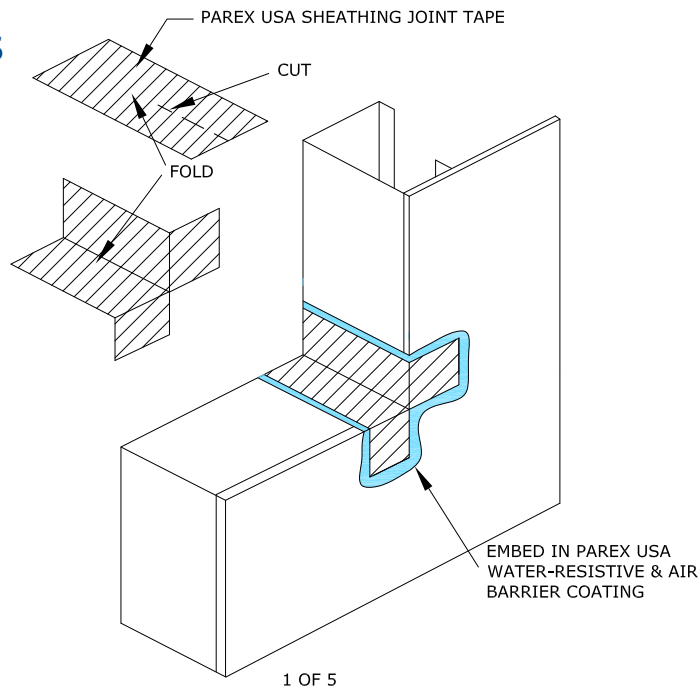
TERMINATIONS AT FOUNDATIONS



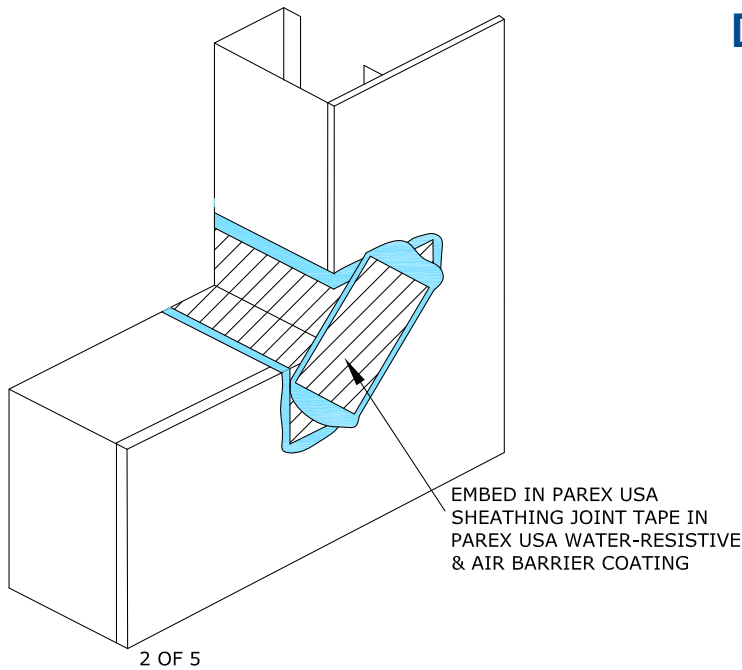
Note:
Requires building officials approval.
Weep screed does not extend below soul plate due to ADA compliance sidewalk.
Waterproof membrane replaces weep screed counterflashing function.

WRB 1.10 SIDEWALK FLOORLINE FOUNDATION

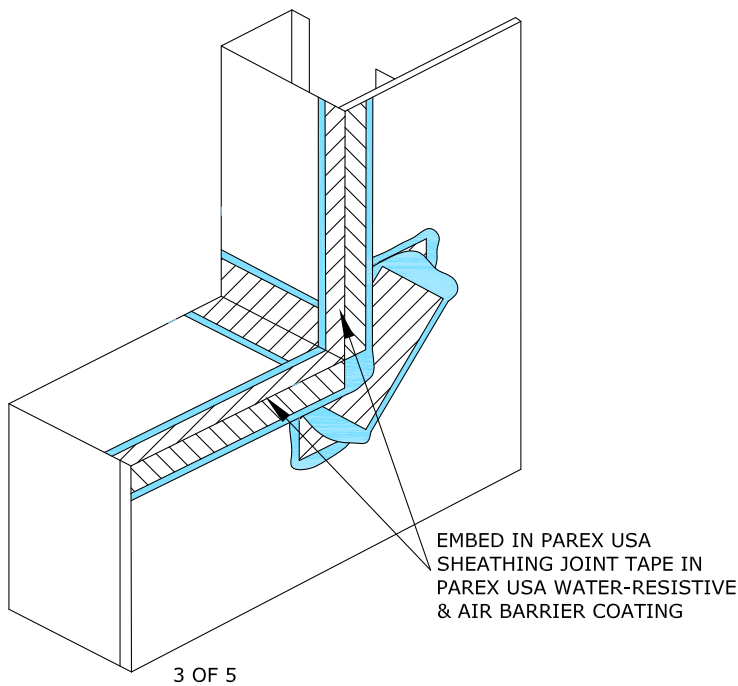
WINDOW AND DOOR TERMINATIONS



WRB 1.11 ROUGH OPENING TREATMENT – 1 OF 5

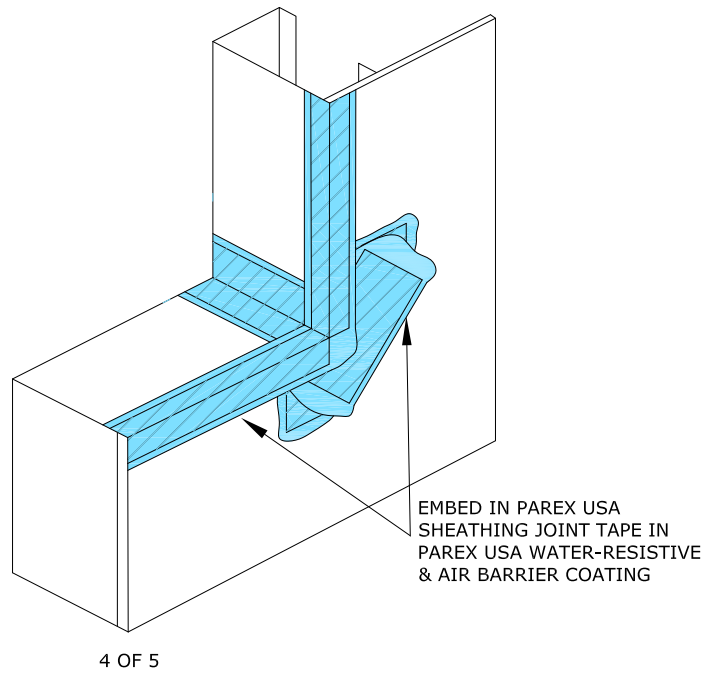


WRB 1.12 ROUGH OPENING TREATMENT – 2 OF 5

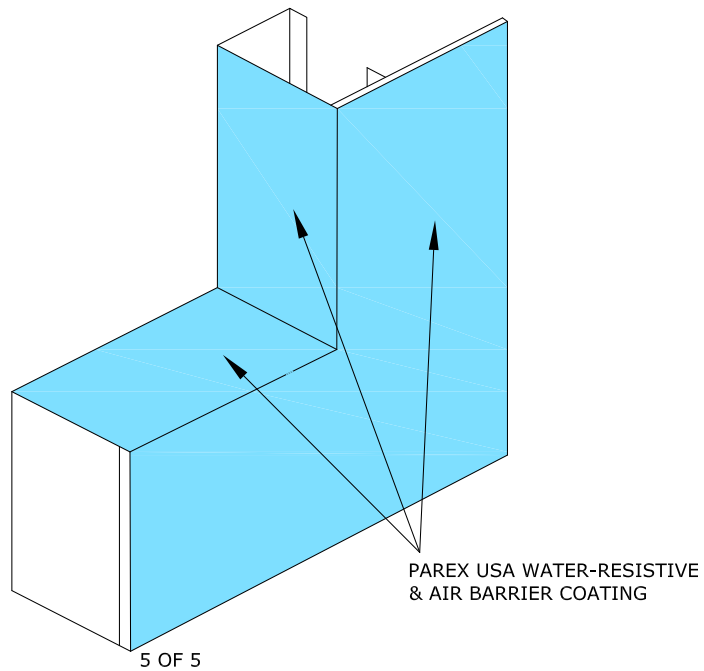


WRB 1.13 ROUGH OPENING JAMB & SILL – 3 OF 5

WINDOW AND DOOR TERMINATIONS

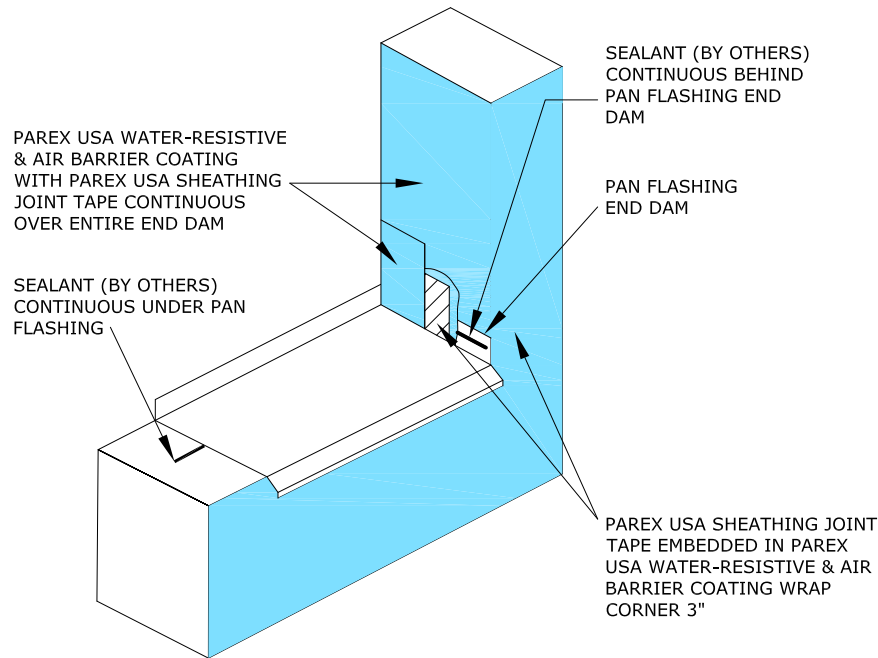


WRB 1.14 ROUGH OPENING JAMB & SILL – 4 OF 5

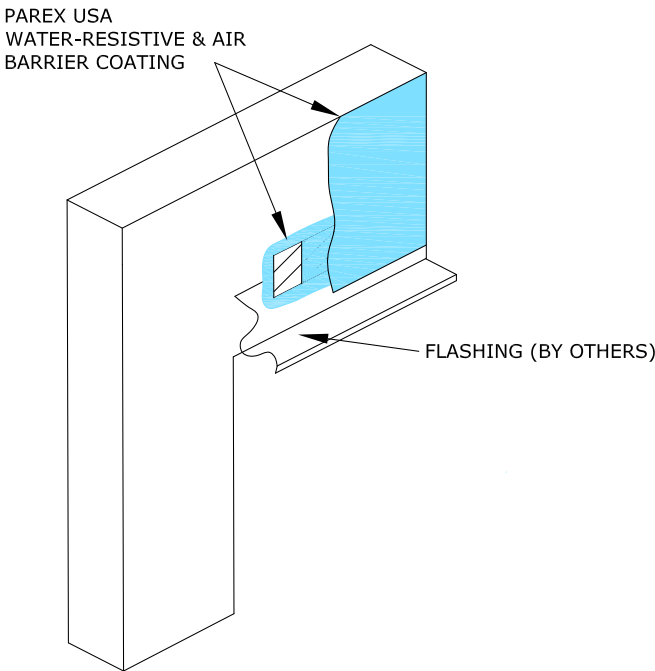


WRB 1.15 ROUGH OPENING TREATMENT – 5 OF 5

Note:
Provide end /back dams
as required. Install pan
flashing into wet sealant
to create air seal.

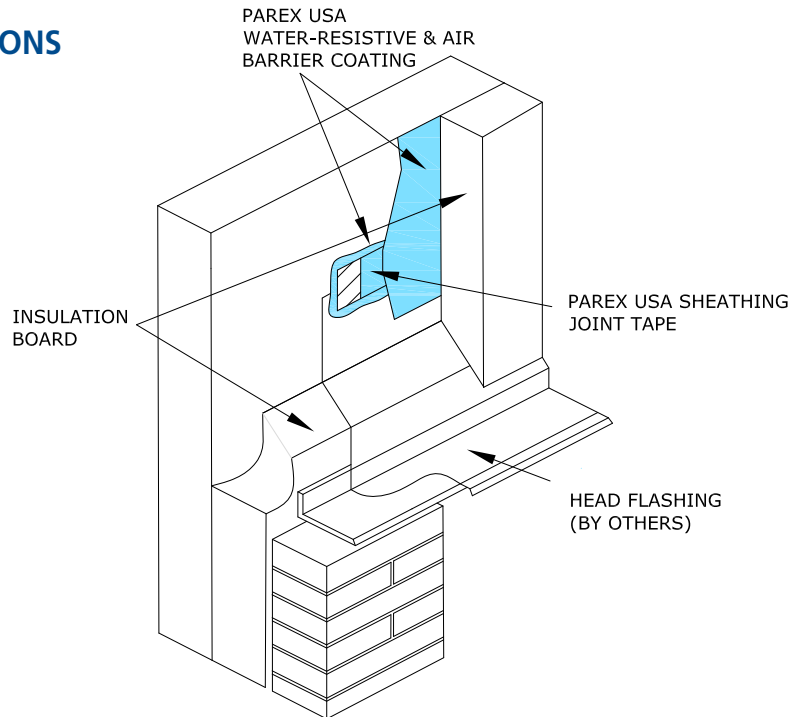


WRB 1.16 TERMINATION AT SILL PAN FLASHING END DAM



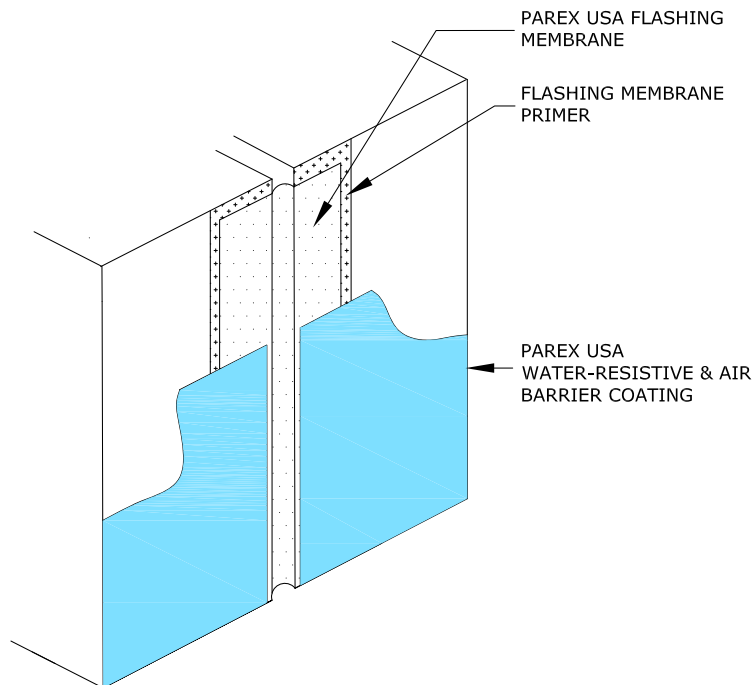
WRB 1.17 HEAD FLASHING

WINDOW AND DOOR TERMINATIONS



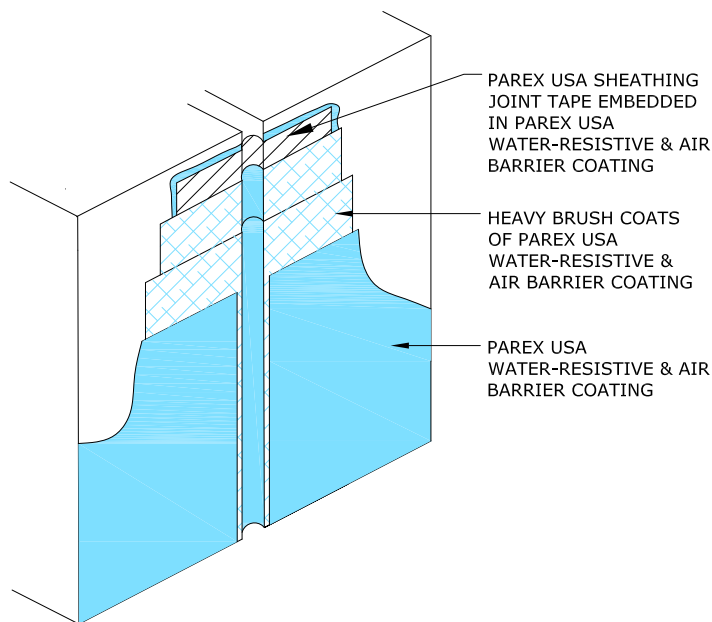
WRB 1.18 SEAL AT MASONRY HEAD FLASHING

EXPANSION JOINTS



Note:
Provide slack in the
flashing membrane to
allow for movement.

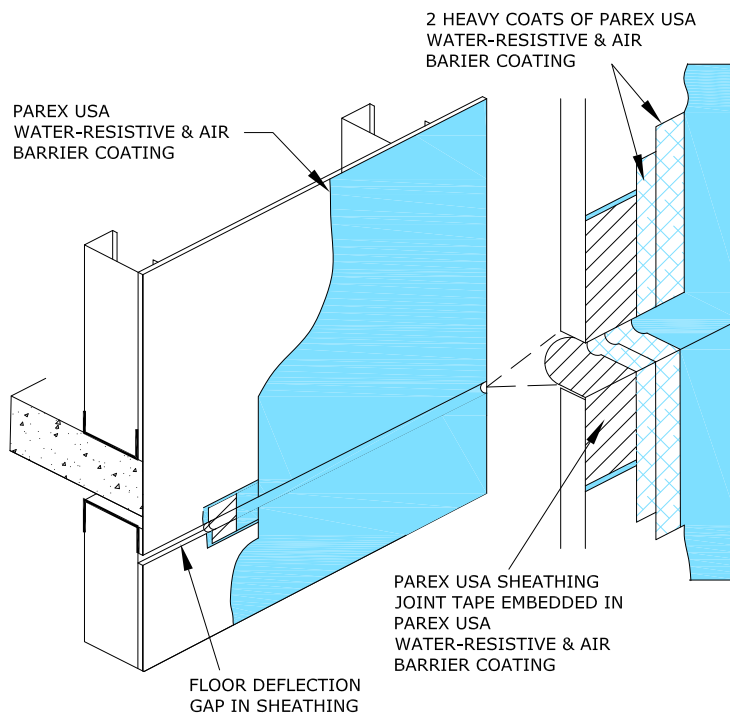
WRB 1.19 EXPANSION JOINT A



WRB 1.20 EXPANSION JOINT B

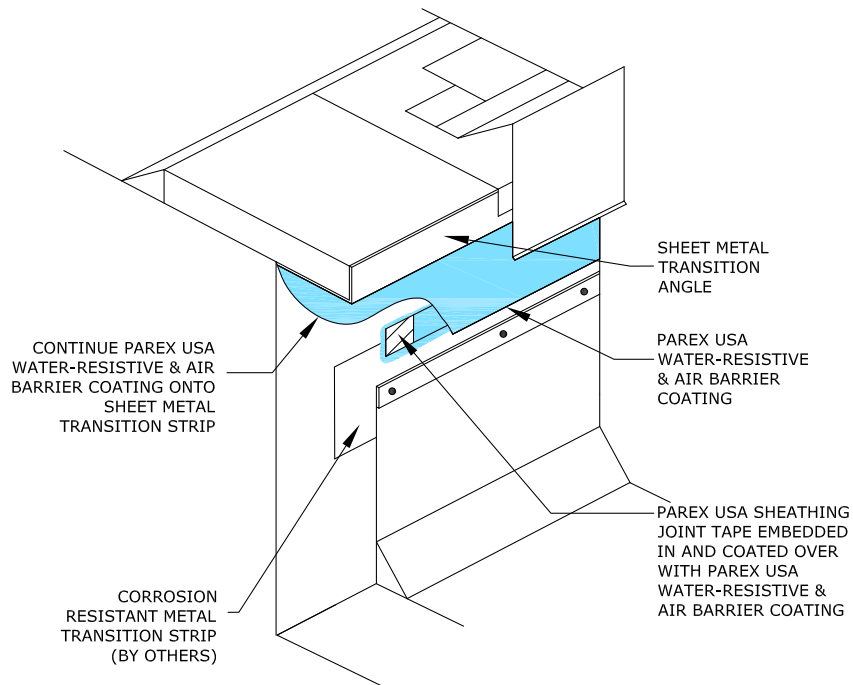
ROOFS

Note:
Parex USA Flashing Membrane/Primer may be used as an alternative to Parex USA Reinforced Water Resistive and Air Barrier coating.

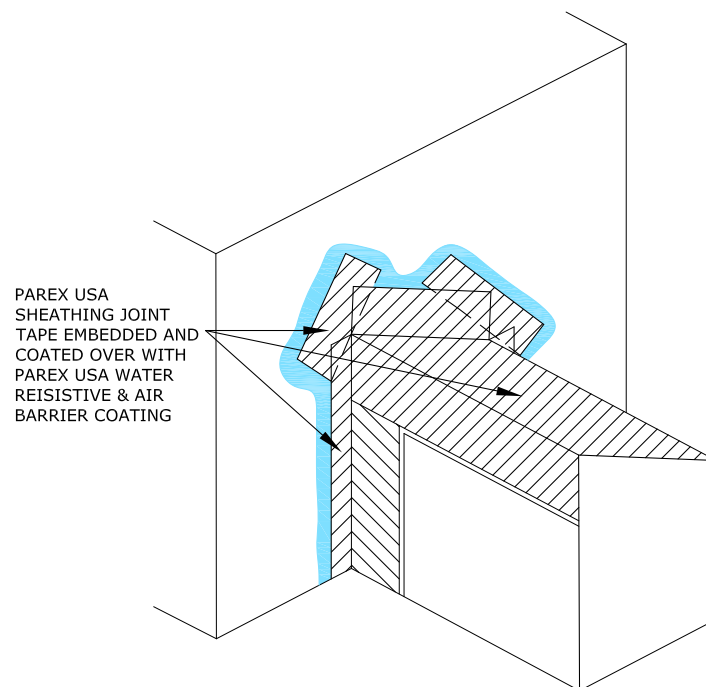


WRB 1.21 FLOOR LINE DEFLECTION JOINTS

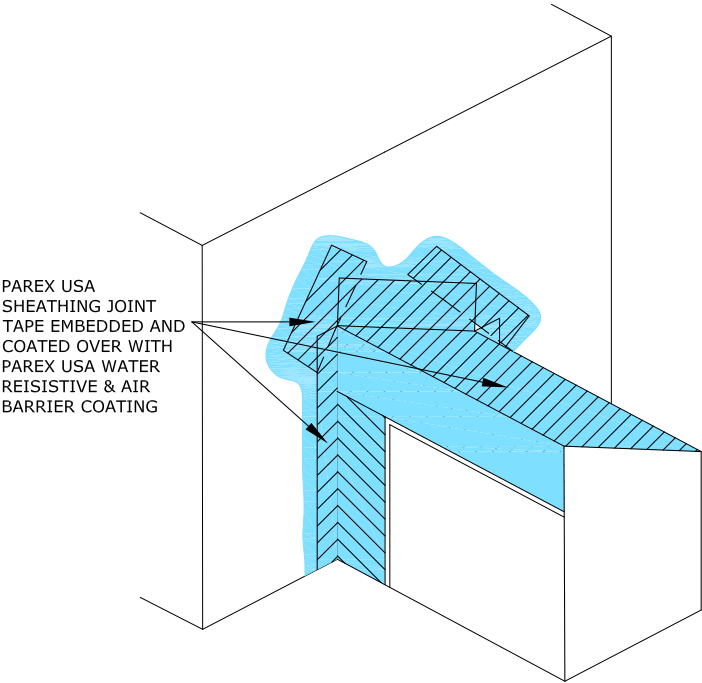
ROOFS



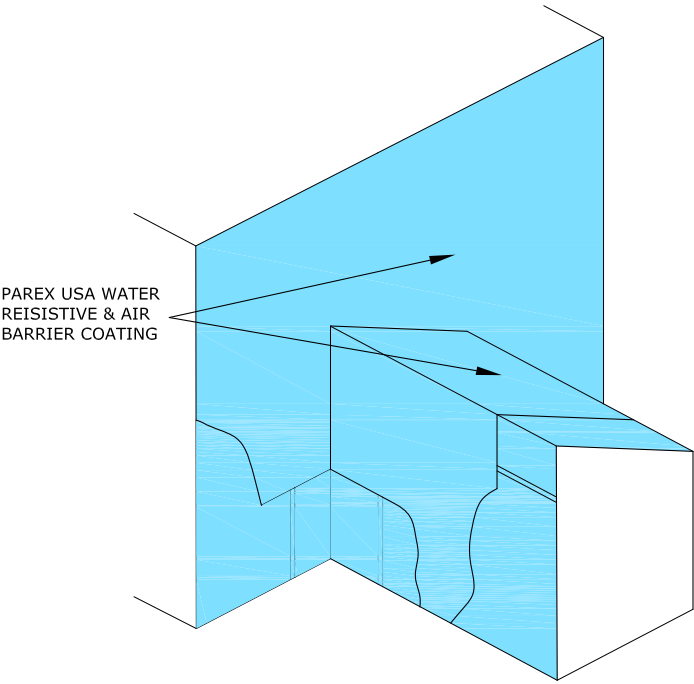
WRB 1.22 TERMINATION AT ROOFS



WRB 1.23 LOW PARAPET HIGH WALL INTERSECTION – 1 OF 3

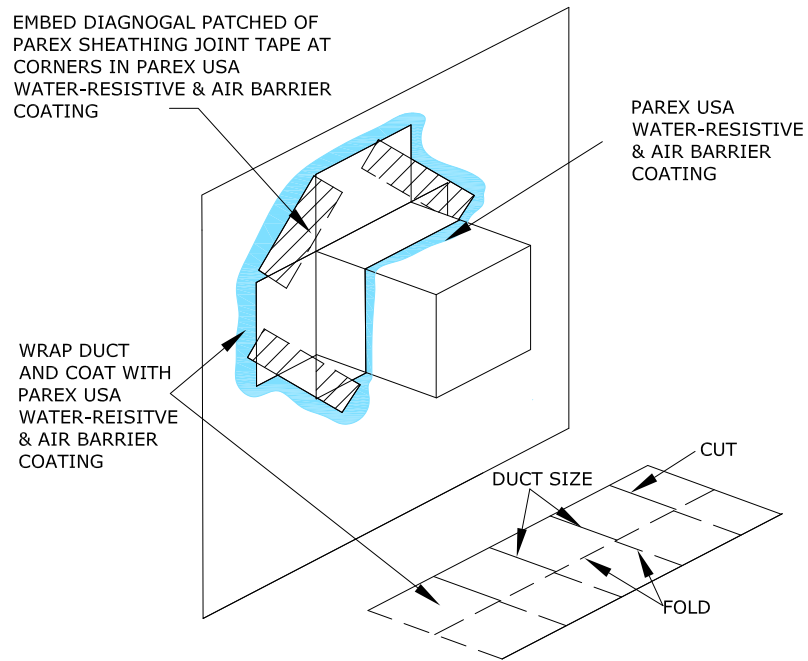


WRB 1.24 LOW PARAPET HIGH WALL INTERSECTION – 2 OF 3

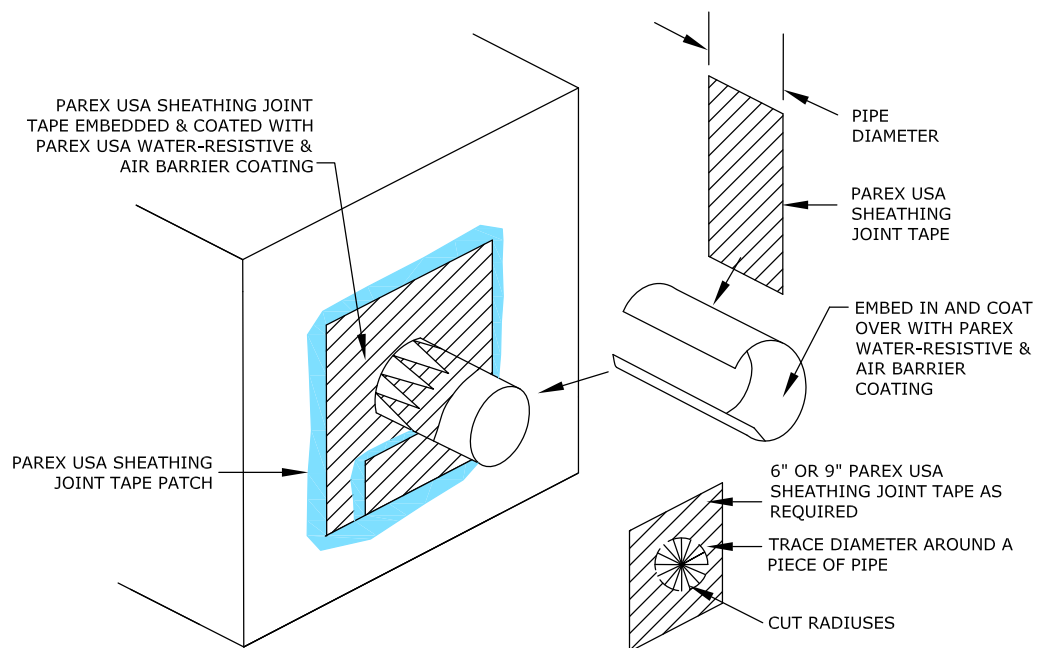


WRB 1.25 LOW PARAPET HIGH WALL INTERSECTION – 3 OF 3

PENETRATIONS

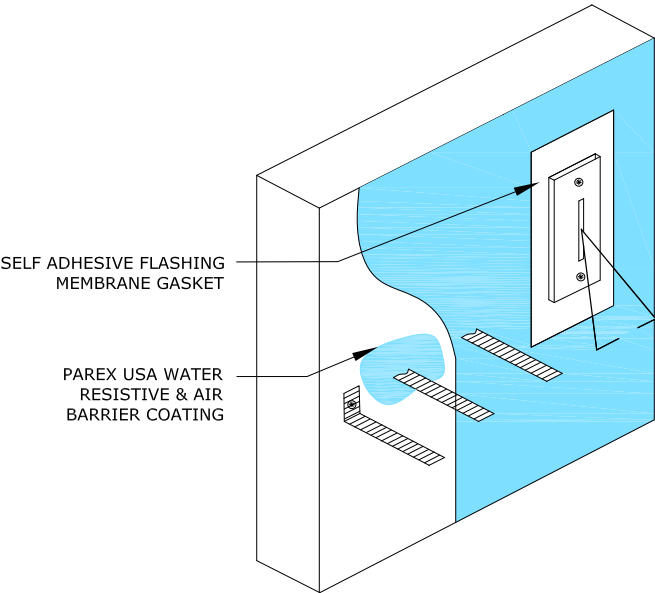


WRB 1.26 SEAL AT DUCT PENETRATION



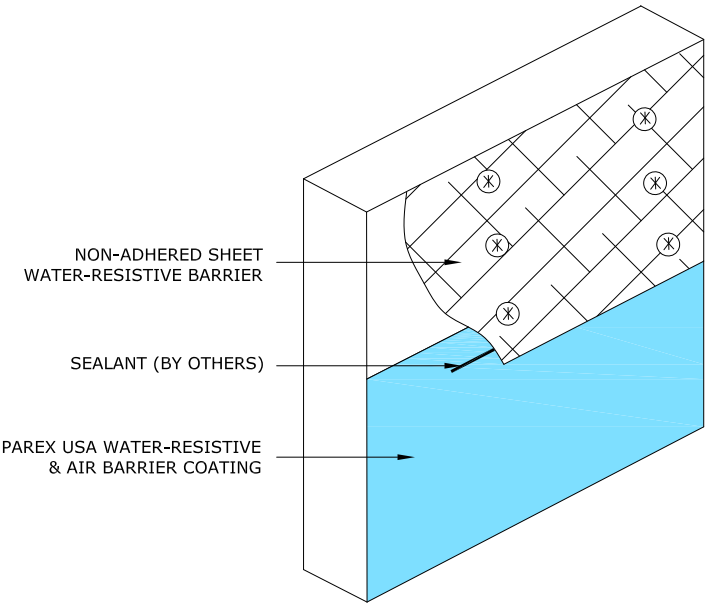
WRB 1.27 SEAL AT PIPE PENETRATION

Note:
Contact brick anchor
manufacturer for
installation instructions.



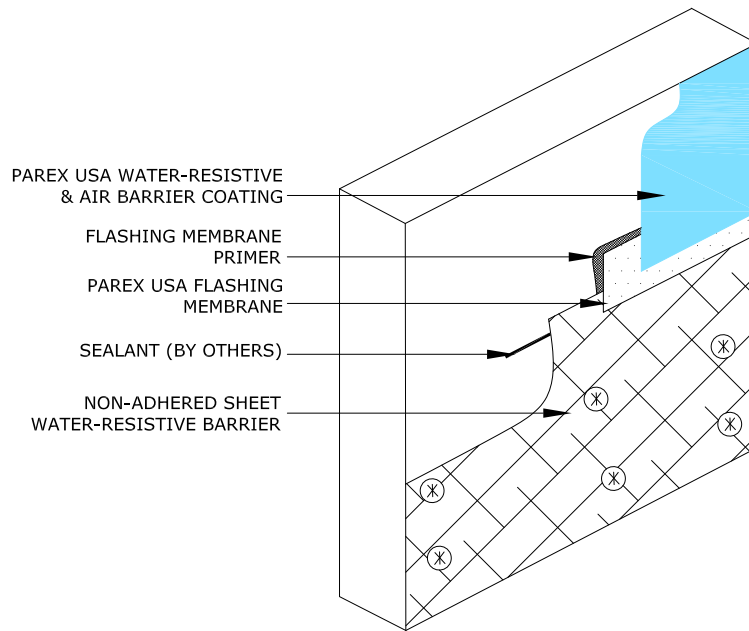
WRB 1.28 TYPICAL APPLICATION AT BRICK TIES

TRANSITIONS TO DISSIMILAR
WATER-RESISTIVE BARRIERS

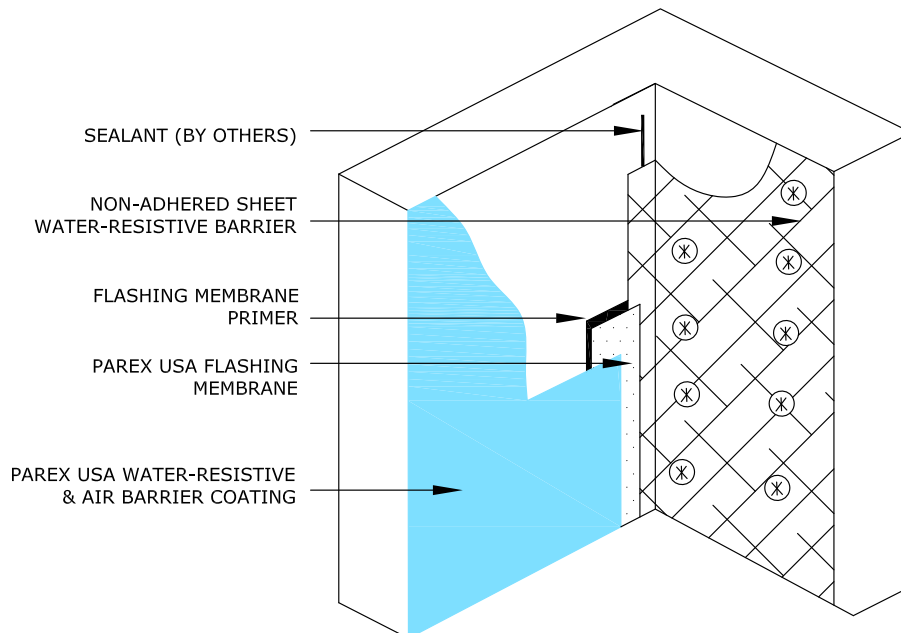


WRB 1.29 HORIZONTAL TRANSITION TO NON-ADHERED WATER-RESISTIVE BARRIER SHEET ABOVE

TRANSITIONS TO DISSIMILAR WATER-RESISTIVE BARRIERS



WRB 1.30 HORIZONTAL TRANSITION TO NON-ADHERED WATER-RESISTIVE BARRIER SHEET ABOVE



WRB 1.31 VERTICAL TRANSITION TO NON-ADHERED WATER-RESISTIVE BARRIER SHEET

Parex USA Water Resistive Barriers Details

Cold-Fluid Applied Waterproofing
CSI SECTION 07 14 16

Fluid-Applied Membrane Air Barriers
CSI SECTION 07 27 26

Corporate Office

Parex USA, Inc.
4125 E. La Palma Ave., Suite 250
Anaheim, CA 92807
(866) 516-0061
Tech Support: (800) 226-2424

Facilities

Anaheim, CA
French Camp, CA
North Hollywood, CA
Riverside, CA
Colorado Springs, CO

Fort Pierce, FL
Dalton, GA
Redan, GA
Albuquerque, NM
Wilkes Barre, PA
San Antonio, TX



air barrier
abaa
association of
america



PAREXUSA
SUSTAINABILITY